

APC Anti-Mouse CD150/SLAM Antibody[TC15-12F12.2]

Catalog Number: E-AB-F1177E

Note: Centrifuge before opening to ensure complete recovery of vial contents.

Description

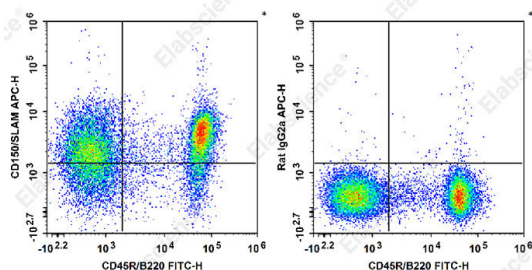
Reactivity	Mouse
Host	Rat
Isotype	Rat IgG2a, λ
Clone No.	TC15-12F12.2
Isotype Control	APC Rat IgG2a, λ Isotype Control[B39-4] [Product E-AB-F09742E]
Conjugation	APC
Conjugation Information	APC is designed to be excited by the Red (627-640 nm) laser and detected using an optical filter centered near 660 nm (e.g., a 660/20 nm bandpass filter).
Storage Buffer	Phosphate buffered solution, pH 7.2, containing 0.09% stabilizer.

Applications

Recommended usage

FCM	Each lot of this antibody is quality control tested by flow cytometric analysis. The amount of the reagent is suggested to be used 5 μL of antibody per test (million cells in 100 μL staining volume or per 100 μL of whole blood). Please check your vial before the experiment. Since applications vary, the appropriate dilutions must be determined for individual use.
------------	--

Data



Staining of C57BL/6 murine splenocytes with FITC Anti-Mouse CD45R/B220 Antibody[RA3.3A 1/6.1] and APC Anti-Mouse CD150/SLAM Antibody[TC15-12F12.2] (left) or APC Rat IgG2a, λ Isotype Control (right). Total viable cells were used for analysis.

Preparation & Storage

Storage	Keep as concentrated solution. This product can be stored at 2-8°C for 24 months. Please protected from prolonged exposure to light and do not freeze.
Shipping	Ice bag

Antigen Information

Alternate Names	CD 150;Signaling lymphocytic activation molecule;Slam;Slamf1
Uniprot ID	Q9QUM4
Gene ID	27218

For Research Use Only

Background

CD150 is a 75-95 kD member of the immunoglobulin superfamily, also known as SLAM (signaling lymphocyte activation molecule) or IPO-3. CD150, a single chain type I transmembrane molecule, is expressed on thymocytes, T cell subsets, B cells, dendritic cells, and endothelial cells. The expression is upregulated upon activation. CD150 expression has been shown to be maintained on Th1 but not Th2 clones. T regulatory cells express a relatively high level of CD150. Antibodies against CD150 have been shown to augment IFN- γ production by Th1 cells, especially when co-stimulated through the TCR. CD150 associates with the src homology 2-domain-containing protein tyrosine phosphatase SHP-2, and this association is thought to be involved in signal transduction. In combination with CD48, CD150 is a useful marker for hematopoietic stem cell studies.