

APOL2 Polyclonal Antibody

Catalog Number: E-AB-19319

Note: Centrifuge before opening to ensure complete recovery of vial contents.

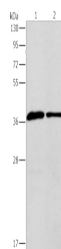
Description

Reactivity	Human
Immunogen	Synthetic peptide of human APOL2
Host	Rabbit
Isotype	IgG
Purification	Antigen affinity purification
Conjugation	Unconjugated
Formulation	PBS with 0.05% NaN ₃ and 40% Glycerol, pH7.4

Applications Recommended Dilution

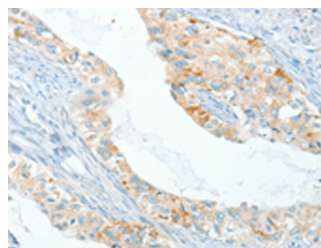
WB	1:500-1:2000
IHC	1:100-1:300
ELISA	1:2000-1:10000

Data

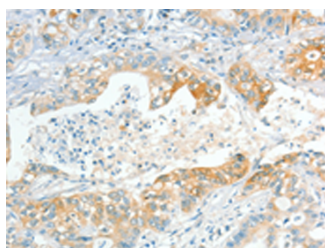


Western blot analysis of Human fetal liver tissue huvec cells using APOL2 Polyclonal Antibody at dilution of 1:725

Observed MW: Refer to figures
Calculated Mw: 37 kDa



Immunohistochemistry of paraffin-embedded Human cervical cancer tissue using APOL2 Polyclonal Antibody at dilution of 1:80 (x200)



Immunohistochemistry of paraffin-embedded Human gastric cancer tissue using APOL2 Polyclonal Antibody at dilution of 1:80 (x200)

Preparation & Storage

Storage Store at -20°C. Avoid freeze / thaw cycles.

Background

For Research Use Only

A Reliable Research Partner in Life Science and Medicine

Toll-free: 1-888-852-8623

Web: www.elabscience.com

Tel: 1-832-243-6086

Email: techsupport@elabscience.com

Fax: 1-832-243-6017

APOL2 Polyclonal Antibody

Catalog Number: E-AB-19319



This gene is a member of the apolipoprotein L gene family. The encoded protein is found in the cytoplasm, where it may affect the movement of lipids or allow the binding of lipids to organelles. Two transcript variants encoding the same protein have been found for this gene.

For Research Use Only

A Reliable Research Partner in Life Science and Medicine

Toll-free: 1-888-852-8623

Tel: 1-832-243-6086

Fax: 1-832-243-6017

Web: www.elabscience.com

Email: techsupport@elabscience.com