

Recombinant CENP-A Monoclonal Antibody

catalog number: **AN301489L**

Note: Centrifuge before opening to ensure complete recovery of vial contents.

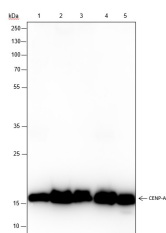
Description

Reactivity	Human;Rat;Mouse
Immunogen	Recombinant human CENP-A fragment
Host	Rabbit
Isotype	IgG, κ
Clone	A184
Purification	Protein A purified
Buffer	PBS, 50% glycerol, 0.05% Proclin 300, 0.05% protein protectant.

Applications Recommended Dilution

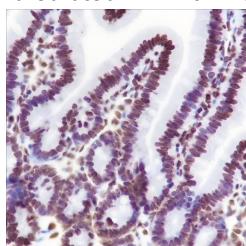
WB	1:500-1:2000
IHC	1:100-1:1000
IF	1:50
FCM	1:50-1:100

Data

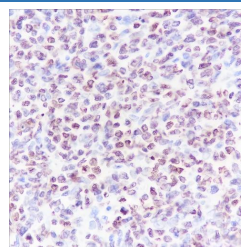
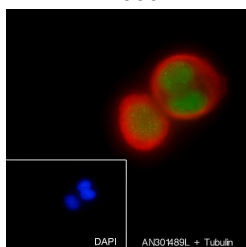


Western Blot with CENP-A Monoclonal Antibody at dilution of 1:2000. Lane 1: HeLa, Lane 2: A375, Lane 3: HCT-116, Lane 4: Mouse colon, Lane 5: Rat colon

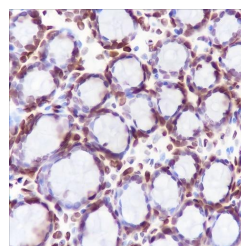
Observed-MW:18 kDa
Calculated-MW:16 kDa



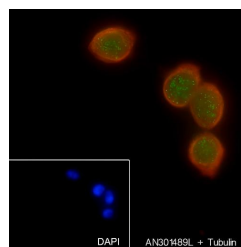
Immunohistochemistry of paraffin-embedded Mouse small intestine using CENP-A Monoclonal Antibody at dilution of 1:1000.



Immunohistochemistry of paraffin-embedded Human lymphoma using CENP-A Monoclonal Antibody at dilution of 1:100.



Immunohistochemistry of paraffin-embedded Rat colon using CENP-A Monoclonal Antibody at dilution of 1:1000.



For Research Use Only

Toll-free: 1-888-852-8623
Web: www.elabscience.com

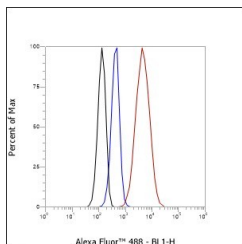
Tel: 1-832-243-6086
Email: techsupport@elabscience.com

Fax: 1-832-243-6017

Rev. V1.0

Immunofluorescent analysis of (100% Ice-cold methanol) fixed PC-3 cells using anti-CENP-A Monoclonal Antibody at dilution of 1:50.

Immunofluorescent analysis of (100% Ice-cold methanol) fixed U-2 OS cells using anti-CENP-A Monoclonal Antibody at dilution of 1:50.



Flow cytometric analysis of human CENP-A expression on HeLa cells. Cells were stained with purified anti-Human CENP-A, then a Alexa Fluor 488-conjugated second step antibody. The histogram were derived from events with the forward and side light-scatter characteristics of intact cells.

Preparation & Storage

Storage	Store at -20°C Valid for 12 months. Avoid freeze / thaw cycles.
Shipping	Ice bag

Background

Histone H3-like nucleosomal protein that is specifically found in centromeric nucleosomes. Replaces conventional H3 in the nucleosome core of centromeric chromatin at the inner plate of the kinetochore. The presence of CENPA subtly modifies the nucleosome structure and the way DNA is wrapped around the nucleosome and gives rise to protruding DNA ends that are less well-ordered and rigid compared to nucleosomes containing histone H3. May serve as an epigenetic mark that propagates centromere identity through replication and cell division. Required for recruitment and assembly of kinetochore proteins, and as a consequence required for progress through mitosis, chromosome segregation and cytokinesis.

For Research Use Only