

## NOX4 Polyclonal Antibody

catalog number: E-AB-70215

**Note:** Centrifuge before opening to ensure complete recovery of vial contents.

### Description

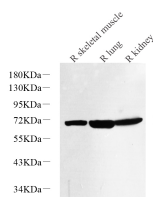
<b>Reactivity</b>	Human;Mouse;Rat
<b>Immunogen</b>	KLH conjugated Synthetic peptide corresponding to Mouse NOX4
<b>Host</b>	Rabbit
<b>Isotype</b>	IgG
<b>Purification</b>	Affinity purification
<b>Conjugation</b>	Unconjugated
<b>Buffer</b>	Phosphate buffered solution, pH 7.4, containing 0.05% stabilizer, 1% protein protectant and 50% glycerol.

### Applications

### Recommended Dilution

<b>WB</b>	1:1000-1:2000
<b>IHC</b>	1:400-1:1000

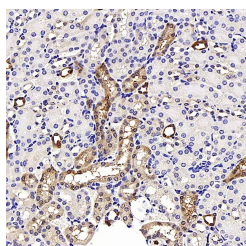
### Data



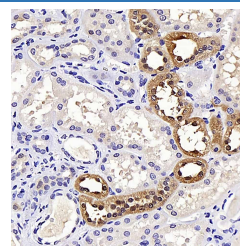
Western Blot analysis of various samples using NOX4 Polyclonal Antibody at dilution of 1:1000.

**Observed-MW:70 kDa**

**Calculated-MW:70 kDa**



Immunohistochemistry analysis of paraffin-embedded mouse kidney using NOX4 Polyclonal Antibody at dilution of 1:400.



Immunohistochemistry analysis of paraffin-embedded human kidney using NOX4 Polyclonal Antibody at dilution of 1:400.

### Preparation & Storage

<b>Storage</b>	Store at -20°C Valid for 12 months. Avoid freeze / thaw cycles.
<b>Shipping</b>	The product is shipped with ice pack, upon receipt, store it immediately at the temperature recommended.

### Background

### For Research Use Only

Tel: 400-999-2100

Web: [www.elabscience.cn](http://www.elabscience.cn)

Email: [techsupport@elabscience.cn](mailto:techsupport@elabscience.cn)

Rev. V1.9

This gene encodes a member of the NOX-family of enzymes that functions as the catalytic subunit the NADPH oxidase complex. The encoded protein is localized to non-phagocytic cells where it acts as an oxygen sensor and catalyzes the reduction of molecular oxygen to various reactive oxygen species (ROS). The ROS generated by this protein have been implicated in numerous biological functions including signal transduction, cell differentiation and tumor cell growth. A pseudogene has been identified on the other arm of chromosome 11. Alternative splicing results in multiple transcript variants.