

PRPF8 Polyclonal Antibody

catalog number: E-AB-62352

Note: Centrifuge before opening to ensure complete recovery of vial contents.

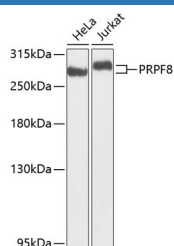
Description

Reactivity	Human;Mouse;Rat
Immunogen	A synthetic peptide of human PRPF8 (NP_006436.3).
Host	Rabbit
Isotype	IgG
Purification	Affinity purification
Buffer	Phosphate buffered solution, pH 7.4, containing 0.05% stabilizer and 50% glycerol.

Applications

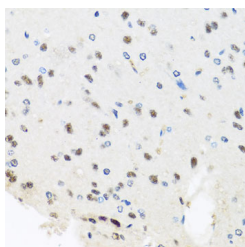
Applications	Recommended Dilution
WB	1:500-1:1000
IHC	1:50-1:100
IF	1:50-1:100

Data

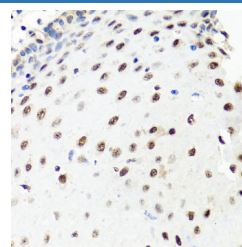


Western blot analysis of extracts of various cell lines using PRPF8 Polyclonal Antibody at dilution of 1:1000.

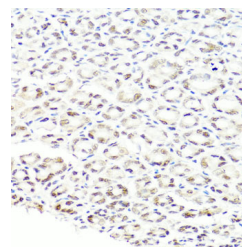
Observed-MV:274 kDa
Calculated-MV:273 kDa



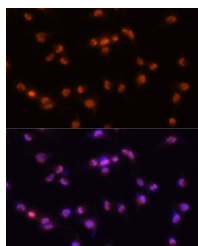
Immunohistochemistry of paraffin-embedded Rat brain using PRPF8 Polyclonal Antibody at dilution of 1:100 (40x lens).



Immunohistochemistry of paraffin-embedded Human esophagus using PRPF8 Polyclonal Antibody at dilution of 1:100 (40x lens).



Immunohistochemistry of paraffin-embedded Mouse stomach using PRPF8 Polyclonal Antibody at dilution of 1:100 (40x lens).



Immunofluorescence analysis of U-251MG cells using PRPF8 Polyclonal Antibody at dilution of 1:100 (20x lens).

Blue: DAPI for nuclear staining.

For Research Use Only

Preparation & Storage

Storage

Store at -20°C Valid for 12 months. Avoid freeze / thaw cycles.

Shipping

The product is shipped with ice pack, upon receipt, store it immediately at the temperature recommended.

Background

Pre-mRNA splicing occurs in 2 sequential transesterification steps. The protein encoded by this gene is a component of both U2- and U12-dependent spliceosomes, and found to be essential for the catalytic step II in pre-mRNA splicing process. It contains several WD repeats, which function in protein-protein interactions. This protein has a sequence similarity to yeast Prp8 protein. This gene is a candidate gene for autosomal dominant retinitis pigmentosa.

For Research Use Only