

## Recombinant Human Ribonuclease K6/RNASE6 Protein (His Tag)

**Catalog Number:** PKSH033003

**Note:** Centrifuge before opening to ensure complete recovery of vial contents.

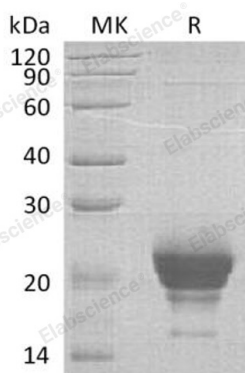
### Description

<b>Species</b>	Human
<b>Source</b>	HEK293 Cells-derived Human Ribonuclease K6;RNASE6 protein Trp24-Leu150, with an C-terminal His
<b>Calculated MW</b>	15.7 kDa
<b>Observed MW</b>	18-25 kDa
<b>Accession</b>	Q93091
<b>Bio-activity</b>	Not validated for activity

### Properties

<b>Purity</b>	> 95 % as determined by reducing SDS-PAGE.
<b>Concentration</b>	Subject to label value.
<b>Endotoxin</b>	< 1.0 EU per µg of the protein as determined by the LAL method.
<b>Storage</b>	Store at < -20°C, stable for 6 months. Please minimize freeze-thaw cycles.
<b>Shipping</b>	This product is provided as liquid. It is shipped at frozen temperature with blue ice/ gel packs. Upon receipt, store it immediately at < - 20°C.
<b>Formulation</b>	Supplied as a 0.2 µm filtered solution of 20mM Tris-HCl, 150mM NaCl, 1mM DTT, 10% Glycerol, pH 7.5.

### Data



> 95 % as determined by reducing SDS-PAGE.

### Background

Ribonuclease K6 (RNASE6) is a secreted protein that belongs to the pancreatic ribonuclease family. Human RNASE6 is synthesized as a 150 amino acid precursor that contains a 23 amino acid signal sequence, and a 127 amino acid mature chain. RNASE6 is expressed in many tissues, with high expression levels in the lung, with lower expression levels in the heart, placenta, kidney, pancreas, liver, brain, and skeletal muscle. It is also detected in monocytes and neutrophils. RNASE6 may have a role in host defense.

### For Research Use Only

Toll-free: 1-888-852-8623  
Web: [www.elabscience.com](http://www.elabscience.com)

Tel: 1-832-243-6086  
Email: [techsupport@elabscience.com](mailto:techsupport@elabscience.com)

Fax: 1-832-243-6017