

MYL3 Polyclonal Antibody

catalog number: E-AB-11415

Note: Centrifuge before opening to ensure complete recovery of vial contents.

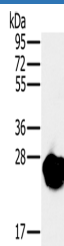
Description

Reactivity	Human;Mouse;Rat
Immunogen	Recombinant protein of human MYL3
Host	Rabbit
Isotype	IgG
Purification	Affinity purification
Buffer	Phosphate buffered solution, pH 7.4, containing 0.05% stabilizer and 50% glycerol.

Applications

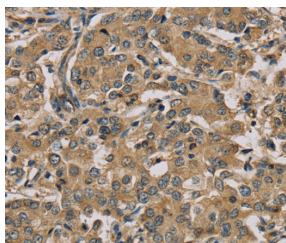
Applications	Recommended Dilution
WB	1:1000-1:5000
IHC	1:50-1:200

Data

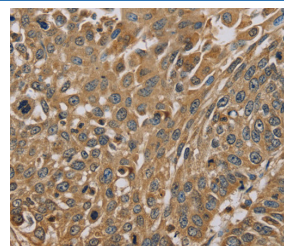


Western Blot analysis of Mouse heart tissue using MYL3 Polyclonal Antibody at dilution of 1:650

Calculated-MW:22 kDa



Immunohistochemistry of paraffin-embedded Human liver cancer using MYL3 Polyclonal Antibody at dilution of 1:45



Immunohistochemistry of paraffin-embedded Human lung cancer using MYL3 Polyclonal Antibody at dilution of 1:45

Preparation & Storage

Storage	Store at -20°C Valid for 12 months. Avoid freeze / thaw cycles.
Shipping	The product is shipped with ice pack, upon receipt, store it immediately at the temperature recommended.

Background

MYL3 encodes myosin light chain 3, an alkali light chain also referred to in the literature as both the ventricular isoform and the slow skeletal muscle isoform. Mutations in MYL3 have been identified as a cause of mid-left ventricular chamber type hypertrophic cardiomyopathy.

For Research Use Only