

# GPD1L Polyclonal Antibody

catalog number: E-AB-52905

**Note:** Centrifuge before opening to ensure complete recovery of vial contents.

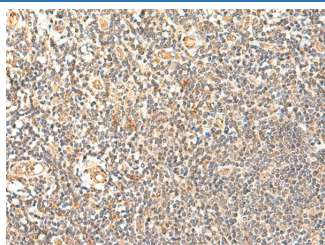
## Description

<b>Reactivity</b>	Human;Mouse
<b>Immunogen</b>	Fusion protein of human GPD1L
<b>Host</b>	Rabbit
<b>Isotype</b>	IgG
<b>Purification</b>	Antigen affinity purification
<b>Conjugation</b>	Unconjugated
<b>buffer</b>	Phosphate buffered solution, pH 7.4, containing 0.05% stabilizer and 50% glycerol.

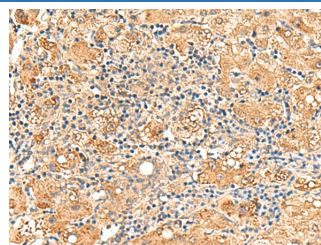
## Applications

Applications	Recommended Dilution
IHC	1:50-1:300

## Data



Immunohistochemistry of paraffin-embedded Human tonsil tissue using GPD1L Polyclonal Antibody at dilution of 1:60(×200)



Immunohistochemistry of paraffin-embedded Human liver cancer tissue using GPD1L Polyclonal Antibody at dilution of 1:60(×200)

## Preparation & Storage

<b>Storage</b>	Store at -20°C Valid for 12 months. Avoid freeze / thaw cycles.
<b>Shipping</b>	The product is shipped with ice pack, upon receipt, store it immediately at the temperature recommended.

## Background

The protein encoded by this gene catalyzes the conversion of sn-glycerol 3-phosphate to glycerone phosphate. The encoded protein is found in the cytoplasm, associated with the plasma membrane, where it binds the sodium channel, voltage-gated, type V, alpha subunit (SCN5A). Defects in this gene are a cause of Brugada syndrome type 2 (BRS2) as well as sudden infant death syndrome (SIDS).

## For Research Use Only