

Elab Fluor® Violet 450 Anti-Mouse Ly6C Antibody[Monts 1]

Catalog Number: E-AB-F1121Q

Note: Centrifuge before opening to ensure complete recovery of vial contents.

Description

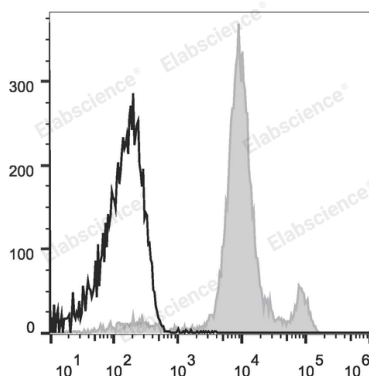
| | |
|--------------------------------|--|
| Reactivity | Mouse |
| Host | Rat |
| Isotype | Rat IgG2a, κ |
| Clone No. | Monts 1 |
| Isotype Control | Elab Fluor® Violet 450 Rat IgG2a, κ Isotype Control[2A3] [Product E-AB-F09832Q] |
| Conjugation | Elab Fluor® Violet 450 |
| Conjugation Information | Elab Fluor® Violet 450 is designed to be excited by the violet laser (405 nm) and detected using an optical filter centered near 450 nm (e.g., a 450/45 nm bandpass filter). |
| Storage Buffer | Phosphate buffered solution, pH 7.2, containing 0.09% stabilizer and 1% protein protectant. |

Applications

Recommended usage

| | |
|------------|--|
| FCM | Each lot of this antibody is quality control tested by flow cytometric analysis. The amount of the reagent is suggested to be used 5 μL of antibody per test (million cells in 100 μL staining volume or per 100 μL of whole blood). Please check your vial before the experiment. Since applications vary, the appropriate dilutions must be determined for individual use. |
|------------|--|

Data



C57BL/6 murine bone marrow cells are stained with Elab

Fluor® Violet 450 Anti-Mouse Ly6C Antibody (filled gray histogram). Unstained bone marrow cells (empty black histogram) are used as control.

Preparation & Storage

| | |
|-----------------|---|
| Storage | Keep as concentrated solution. This product can be stored at 2-8°C for 12 months. Please protected from prolonged exposure to light and do not freeze. |
| Shipping | Ice bag |

Antigen Information

| | |
|------------------------|--|
| Alternate Names | locus C;Ly 6C;Ly6c1;Ly6c2;Lymphocyte antigen 6 complex |
| Uniprot ID | P0CW03 |
| Gene ID | 17067 |

For Research Use Only

Background

Most hematopoietic cells express one or more members of Ly-6 family. The expression of Ly-6 varies with development stage and activation. Ly-6C is a 14-17 kD GPI-linked surface protein expressed on mouse monocyte/macrophage cells, endothelial cells, neutrophils, and some T cell subsets. Ly-6C is reported to be an indicator of memory CD8+ T cells.