

CXCL12/SDF1 Polyclonal Antibody

catalog number: E-AB-40578

Note: Centrifuge before opening to ensure complete recovery of vial contents.

Description

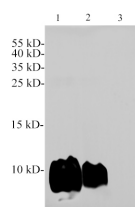
Reactivity	Human;Mouse;Rat
Immunogen	Recombinant Rat CXCL12 protein expressed by E.coli.
Host	Rabbit
Isotype	IgG
Purification	Antigen Affinity Purification
Conjugation	Unconjugated
buffer	PBS with 0.05% proclin 300, 1% protective protein and 50% glycerol,pH7.4

Applications

Recommended Dilution

WB 1:2000-4000

Data



Western blotting with anti-CXCL12 polyclonal antibody at dilution of 1:2000. Lane 1: THP-1 cell lysate, lane 2: Raw264.7 cell lysate, lane 3: K562 cell lysate for negative control.

Observed-MV:10 kDa
Calculated-MV:10 kDa



Western blot of Rat testis with CXCL4 polyclonal antibody at 1:1000 dilution.

Observed-MV:10 kDa
Calculated-MV:10 kDa

Preparation & Storage

Storage	Store at -20°C Valid for 12 months. Avoid freeze / thaw cycles.
Shipping	The product is shipped with ice pack,upon receipt,store it immediately at the temperature recommended.

Background

The stromal cell derived factor 1 (SDF1/CXCL12) is a small, pro-inflammatory chemoattractant cytokine that regulates leukocyte trafficking through interactions with its cognate 7-transmembrane G protein-coupled receptors. The SDF1/CXCL12 receptor, CXCR4, also serves as a coreceptor for the entry of human immunodeficiency virus into target cells. SDF1/CXCL12 may regulate homing and maintenance of CXCR4-expressing stem or progenitor cells, including embryonic and many somatic stem cells. Many cancer cells express CXCR4, suggesting that SDF1/CXCL12 plays a role in cancer metastasis. Alternative splicing and differential processing during maturation produce a pair of SDF1/CXCL12 isoforms (SDF1/CXCL12 α and SDF1/CXCL12 β) that have different properties and biological activities. Additional isoforms of SDF1/CXCL12 have been reported.

For Research Use Only