

Recombinant Human Carboxypeptidase B2/CPB2 Protein (His Tag)

Catalog Number: PKSH032172

Note: Centrifuge before opening to ensure complete recovery of vial contents.

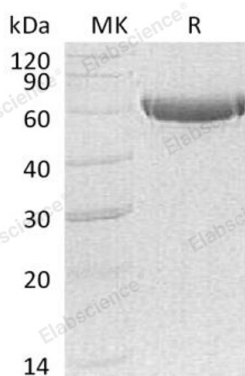
Description

Species	Human
Source	HEK293 Cells-derived Human Carboxypeptidase B2;CPB2 protein Phe23-Val423, with an C-terminal His
Calculated MW	47.0 kDa
Observed MW	55-65 kDa
Accession	NP_001863.3
Bio-activity	Not validated for activity

Properties

Purity	> 95 % as determined by reducing SDS-PAGE.
Concentration	Subject to label value.
Endotoxin	< 1.0 EU per µg of the protein as determined by the LAL method.
Storage	Store at < -20°C, stable for 6 months. Please minimize freeze-thaw cycles.
Shipping	This product is provided as liquid. It is shipped at frozen temperature with blue ice/ gel packs. Upon receipt, store it immediately at < -20°C.
Formulation	Supplied as a 0.2 µm filtered solution of 20mM Tris-HCl, 150mM NaCl, 1mM ZnCl ₂ , 10% Glycerol, pH8.0.

Data



> 95 % as determined by reducing SDS-PAGE.

Background

Carboxypeptidase B2 (CPB2) is a secreted enzyme that belongs to the peptidase M14 family. CPB2 is synthesized by the liver and circulates in the plasma as a plasminogen-bound zymogen by the liver and circulates in the plasma as a plasminogen-bound zymogen. CPB2 cleaves C-terminal arginine or lysine residues from biologically active peptides, such as kinins or anaphylatoxins, in the circulation regulating their activities. CPB2 also down-regulates fibrinolysis by removing C-terminal lysine residues from fibrin that has already been partially degraded by plasmin. CPB2 exhibits carboxypeptidase activity when it is activated by proteolysis at residue Arg92 of the thrombin/thrombomodulin complex. Activated CPB2 reduces fibrinolysis by removing the fibrin C-terminal residues that are important for the binding and activation of plasminogen.

For Research Use Only