

Recombinant Human HER2/ErbB2 Protein (His Tag)

Catalog Number: PKSH031997

Note: Centrifuge before opening to ensure complete recovery of vial contents.

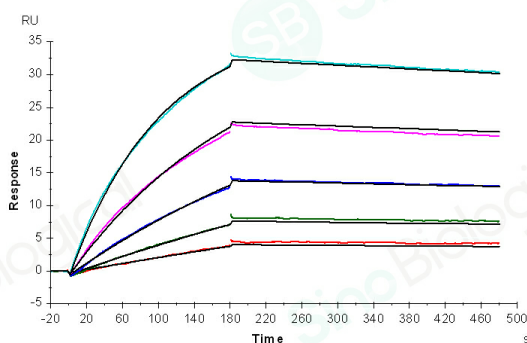
Description

Species	Human
Source	HEK293 Cells-derived Human HER2/ErbB2 protein Met 1-Thr 652, with an C-terminal His
Calculated MW	71.0 kDa
Observed MW	100-110 kDa
Accession	NP_004439.2
Bio-activity	Immobilized human ErbB2 at 2.5 µg/ml (100 µl/well) can bind Herceptin with a linear range of 1.28-32 ng/ml.

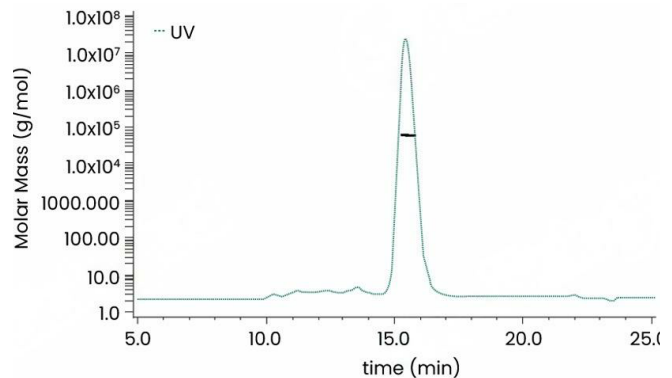
Properties

Purity	> 90 % as determined by reducing SDS-PAGE.
Endotoxin	< 1.0 EU per µg of the protein as determined by the LAL method.
Storage	Generally, lyophilized proteins are stable for up to 12 months when stored at -20 to -80°C. Reconstituted protein solution can be stored at 4-8°C for 2-7 days. Aliquots of reconstituted samples are stable at < -20°C for 3 months.
Shipping	This product is provided as lyophilized powder which is shipped with ice packs.
Formulation	Lyophilized from sterile PBS, pH 7.4. Normally 5% - 8% trehalose, mannitol and 0.01% Tween 80 are added as protectants before lyophilization. Please refer to the specific buffer information in the printed manual.
Reconstitution	Please refer to the printed manual for detailed information.

Data



Captured anti-Her2 IgG1 antibody on proA Chip can bind Her2 (Cat: PKSH031997) with an affinity constant of 3.270 nM as determined in a SPR assay (Biacore T200).



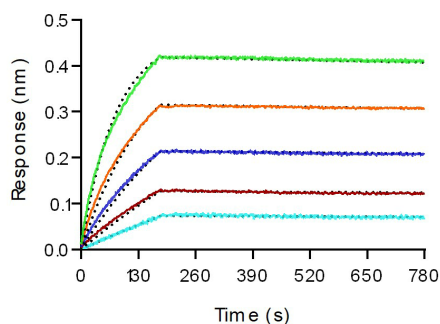
The purity of Recombinant Human HER2/ErbB2 Protein, His Tag, HPLC-verified (Cat: PKSH031997) was more than 90% and the molecular weight of this protein is around 87.5 kDa verified by SEC-MALS.

For Research Use Only

Toll-free: 1-888-852-8623
Web: www.elabscience.com

Tel: 1-832-243-6086
Email: techsupport@elabscience.com

Fax: 1-832-243-6017



Loaded Anti-ErbB2 Antibody (Pertuzumab) on ProA Biosensor, can bind Recombinant Human Her2/ERBB2 Protein, His Tag (Cat: PKSH031997) with an affinity constant of 0.382 nM as determined in BLI assay (Sartorius Octet RED384).

Background

Epidermal growth factor receptor 2 (HER2), also known as ErbB2, NEU, and CD340, is a type I membrane glycoprotein, and belongs to the epidermal growth factor (EGF) receptor family. HER2 protein cannot bind growth factors due to the lacking of ligand binding domain of its own and autoinhibited constitutively. However, HER2 forms a heterodimer with other ligand-bound EGF receptor family members, therefore stabilizes ligand binding and enhances kinase-mediated activation of downstream molecules. HER2 plays a key role in development, cell proliferation and differentiation. HER2 gene has been reported to associate with malignancy and a poor prognosis in numerous carcinomas, including breast, prostate, ovarian, lung cancers and so on.