

Recombinant Human ADAMDEC1 Protein (His Tag)

Catalog Number: PKSH032044

Note: Centrifuge before opening to ensure complete recovery of vial contents.

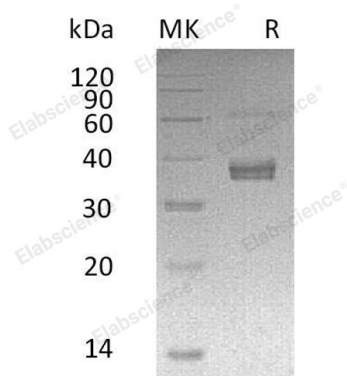
Description

Species	Human
Source	HEK293 Cells-derived Human ADAMDEC1 protein Lys206-Glu470, with an C-terminal His
Calculated MW	30.3 kDa
Observed MW	33-41 kDa
Accession	O15204
Bio-activity	Not validated for activity

Properties

Purity	> 90 % as determined by reducing SDS-PAGE.
Concentration	Subject to label value.
Endotoxin	< 1.0 EU per µg of the protein as determined by the LAL method.
Storage	Store at < -20°C, stable for 6 months. Please minimize freeze-thaw cycles.
Shipping	This product is provided as liquid. It is shipped at frozen temperature with blue ice/gel packs. Upon receipt, store it immediately at < - 20°C.
Formulation	Supplied as a 0.2 µm filtered solution of 20mM Tris-HCl, 150mM NaCl, pH 7.5.

Data



> 90 % as determined by reducing SDS-PAGE.

Background

ADAM DEC1 protein is expressed highly in the small intestine and appendix, moderately in lymph node, mucosal lining of the colon, thymus, spleen and very weakly in the bone marrow. ADAM DEC1 is induced during DC maturation and up-regulated in response to T-cell signals. It may play an important role in the control of the immune response and during pregnancy.

For Research Use Only