

Recombinant Human ABCG2 protein (His tag)

Catalog Number:PDEH100426



Note: Centrifuge before opening to ensure complete recovery of vial contents.

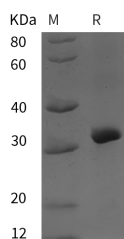
Description

Synonyms	Broad substrate specificity ATP-binding cassette transporter ABCG2;ABCG2;ATP-binding cassette sub-family G member 2;Breast cancer resistance protein;CDw338
Species	Human
Expression Host	E.coli
Sequence	Met 1-Gly 300
Accession	Q9UNQ0
Calculated Molecular Weight	32.9 kDa
Observed molecular weight	32 kDa
Tag	N-His

Properties

Purity	> 95 % as determined by reducing SDS-PAGE.
Endotoxin	Please contact us for more information.
Storage	Generally, lyophilized proteins are stable for up to 12 months when stored at -20 to -80°C. Reconstituted protein solution can be stored at 4-8°C for 2-7 days. Aliquots of reconstituted samples are stable at < -20°C for 3 months.
Shipping	This product is provided as lyophilized powder which is shipped with ice packs.
Formulation	Lyophilized from sterile PBS, pH 7.4. Normally 5 % - 8 % trehalose, mannitol and 0.01 % Tween80 are added as protectants before lyophilization. Please refer to the specific buffer information in the printed manual.
Reconstitution	Please refer to the printed manual for detailed information.

Data



> 95 % as determined by reducing SDS-PAGE.

Background

Hematopoietic stem cells are known to express a membrane transporter molecule, known as P-glycoprotein (Pgp), that is encoded by the multidrug resistance gene 1 (MDR1) . Expression of Pgp appears to confer a proliferative advantage to stem cells through its anti-apoptotic effects . An additional transporter molecule known as ABCG2 (ATP-binding cassette gene 2) or Bcrp1 (Breast cancer resistance protein 1), first identified in a breast cancer cell line , is expressed on stem cells . ABCG2 belongs to a family of molecules that span the cell membrane six times and can exist as either homo or hetero dimers linked by a short intracellular flexible linker region that plays an important role in the efflux of a wide range of substrates

For Research Use Only

A Reliable Research Partner in Life Science and Medicine

Toll-free: 1-888-852-8623

Web: www.elabscience.com

Tel: 1-832-243-6086

Email: techsupport@elabscience.com

Fax: 1-832-243-6017