

Active CASP3 Monoclonal Antibody

Catalog Number: E-AB-22115 7 Publications



Note: Centrifuge before opening to ensure complete recovery of vial contents.

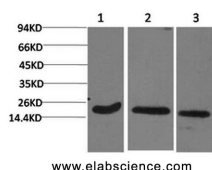
Description

Reactivity	Human, Mouse, Rat
Immunogen	Recombinant Protein
Host	Mouse
Isotype	IgG
Clone	Clone: 5A2
Purification	Protein A purification
Conjugation	Unconjugated
Formulation	PBS with 0.02% sodium azide and 50% glycerol pH 7.4.

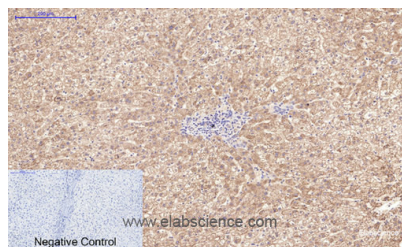
Applications Recommended Dilution

WB	1:500-1:1000
IHC	1:100-1:200
IF	1:100-1:200

Data



Western Blot analysis of 1) Hela, 2) 3T3, 3) Rat brain with Active CASP3 Monoclonal Antibody
Observed Mw: 17kDa



Immunohistochemistry of paraffin-embedded Human liver tissue using Active CASP3 Monoclonal Antibody at dilution of 1:200.

Preparation & Storage

Storage Store at -20°C. Avoid freeze / thaw cycles.

Background

Involved in the activation cascade of caspases responsible for apoptosis execution. At the onset of apoptosis it proteolytically cleaves poly(ADP-ribose) polymerase (PARP) at a '216-Asp-Gly-217' bond. Cleaves and activates sterol regulatory element binding proteins (SREBPs) between the basic helix-loop-helix leucine zipper domain and the membrane attachment domain. Cleaves and activates caspase-6, -7 and -9. Involved in the cleavage of huntingtin.

For Research Use Only

A Reliable Research Partner in Life Science and Medicine

Toll-free: 1-888-852-8623

Web: www.elabscience.com

Tel: 1-832-243-6086

Email: techsupport@elabscience.com

Fax: 1-832-243-6017