

# NCF2 Polyclonal Antibody

catalog number: E-AB-11447

**Note:** Centrifuge before opening to ensure complete recovery of vial contents.

## Description

<b>Reactivity</b>	Human;Mouse
<b>Immunogen</b>	Recombinant protein of human NCF2
<b>Host</b>	Rabbit
<b>Isotype</b>	IgG
<b>Purification</b>	Affinity purification
<b>Conjugation</b>	Unconjugated
<b>buffer</b>	Phosphate buffered solution, pH 7.4, containing 0.05% stabilizer and 50% glycerol.

## Applications

## Recommended Dilution

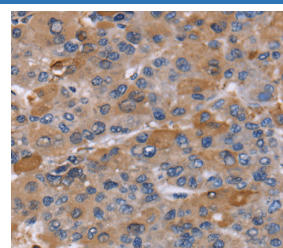
<b>WB</b>	1:200-1:1000
<b>IHC</b>	1:50-1:200

## Data



Western Blot analysis of Human brain malignant glioma tissue using NCF2 Polyclonal Antibody at dilution of 1:200

**Calculated-MV:60 kDa**



Immunohistochemistry of paraffin-embedded Human liver cancer using NCF2 Polyclonal Antibody at dilution of 1:60

## Preparation & Storage

<b>Storage</b>	Store at -20°C Valid for 12 months. Avoid freeze / thaw cycles.
<b>Shipping</b>	The product is shipped with ice pack, upon receipt, store it immediately at the temperature recommended.

## Background

This gene encodes neutrophil cytosolic factor 2, the 67-kilodalton cytosolic subunit of the multi-protein NADPH oxidase complex found in neutrophils. This oxidase produces a burst of superoxide which is delivered to the lumen of the neutrophil phagosome. Mutations in this gene, as well as in other NADPH oxidase subunits, can result in chronic granulomatous disease, a disease that causes recurrent infections by catalase-positive organisms. Alternative splicing results in multiple transcript variants encoding different isoforms.

## For Research Use Only