

BLOC1S2 Polyclonal Antibody

Catalog Number:E-AB-67938



Note: Centrifuge before opening to ensure complete recovery of vial contents.

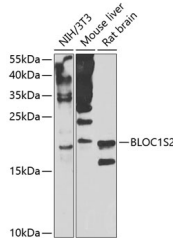
Description

Reactivity	Human,Mouse,Rat
Immunogen	Recombinant fusion protein of human BLOC1S2
Host	Rabbit
Isotype	IgG
Purification	Affinity purification
Conjugation	Unconjugated
Formulation	PBS with 0.02% sodium azide,50% glycerol,pH7.3.

Applications Recommended Dilution

WB	1:500-1:2000
IHC	1:50-1:100

Data



Western blot analysis of extracts of various cell lines using BLOC1S2 Polyclonal Antibody at 1:1000 dilution.

Observed Mw:16kDa
Calculated Mw:11kDa/15kDa

Preparation & Storage

Storage Store at -20°C. Avoid freeze / thaw cycles.

Background

This gene encodes a protein with multiple functions. The encoded protein has been found in association with the centrosome, shown to co-localize with gamma-tubulin, and also found to be one of the proteins in the BLOC-1 complex which functions in the formation of lysosome-related organelles. A pseudogene of this gene is located on the X chromosome. Alternative splicing results in multiple transcript variants.

For Research Use Only

A Reliable Research Partner in Life Science and Medicine

Toll-free: 1-888-852-8623

Web: www.elabscience.com

Tel: 1-832-243-6086

Email: techsupport@elabscience.com

Fax: 1-832-243-6017