

ZGPAT Polyclonal Antibody

Catalog Number:E-AB-66864



Note: Centrifuge before opening to ensure complete recovery of vial contents.

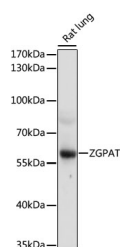
Description

| | |
|---------------------|--|
| Reactivity | Rat |
| Immunogen | Recombinant fusion protein of human ZGPAT (NP_852150.2). |
| Host | Rabbit |
| Isotype | IgG |
| Purification | Affinity purification |
| Conjugation | Unconjugated |
| Formulation | PBS with 0.02% sodium azide, 50% glycerol, pH7.3. |

Applications Recommended Dilution

| | |
|-----------|--------------|
| WB | 1:500-1:2000 |
|-----------|--------------|

Data



Western blot analysis of extracts of Rat lung using ZGPAT Polyclonal Antibody at dilution of 1:1000.

Observed MW:57kDa

Calculated Mw:20kDa/54kDa/55kDa/57kDa

Preparation & Storage

Storage Store at -20°C. Avoid freeze / thaw cycles.

Background

ZGPAT (Zinc finger CCCH-type with G patch domain-containing protein), also known as zinc finger CCCH domain-containing protein 9 (ZC3HDC9) and G patch domain-containing protein 6 (GPATC6), is a 531 amino acid protein that contains a G-patch domain, which is typically found within RNA-binding proteins. Proteins that contain the G-patch domain include some tumor suppressor and DNA-damage repair proteins. ZGPAT also contains one C3H1-type zinc finger, which further supports its probable role as an RNA-binding protein. The gene encoding ZGPAT is inactivated via differential methylation in a oligodendroglioma cell line, suggesting that ZGPAT may have utility as a biomarker. There are two isoforms of ZGPAT that are produced as a result of alternative splicing events.

For Research Use Only

A Reliable Research Partner in Life Science and Medicine

Toll-free: 1-888-852-8623

Web: www.elabscience.com

Tel: 1-832-243-6086

Email: techsupport@elabscience.com

Fax: 1-832-243-6017