

PNN Polyclonal Antibody

catalog number: E-AB-13517

Note: Centrifuge before opening to ensure complete recovery of vial contents.

Description

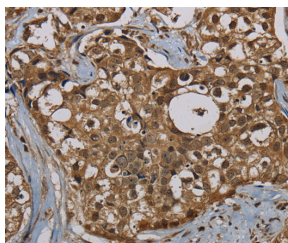
Reactivity	Human;Mouse
Immunogen	Synthetic peptide of human PNN
Host	Rabbit
Isotype	IgG
Purification	Affinity purification
Conjugation	Unconjugated
buffer	Phosphate buffered solution, pH 7.4, containing 0.05% stabilizer and 50% glycerol.

Applications

Recommended Dilution

IHC	1:50-1:200
------------	------------

Data



Immunohistochemistry of paraffin-embedded Human breast cancer tissue using PNN Polyclonal Antibody at dilution 1:50

Preparation & Storage

Storage	Store at -20°C Valid for 12 months. Avoid freeze / thaw cycles.
Shipping	The product is shipped with ice pack, upon receipt, store it immediately at the temperature recommended.

Background

Pinin is a desmosomal associated protein involved with the maintenance of cell to cell adhesion of the epithelium. Pinin is a widespread protein and has been shown to play an important role in cell adhesion through its interaction with nuclear complexes. Pinin is also involved in pre-mRNA splicing through its interactions with a C-terminal RS domain of Cyclophilin G, a Moca type nuclear cyclophilin. Pinin becomes nuclear during the early stages of embryonic development and remains so throughout the entire period. Defects or lack of Pinin can be lethal at perinatal stages and causes defects in the cardiac outflow tract, axial skeleton, palate and dorsal dermis.

For Research Use Only