

Prolactin/PRL Monoclonal Antibody(Detector)

catalog number: AN002310P

Note: Centrifuge before opening to ensure complete recovery of vial contents.

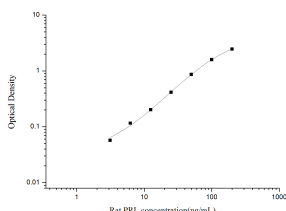
Description

Reactivity	Rat
Immunogen	Recombinant Rat Prolactin/PRL protein expressed by E.coli
Host	Mouse
Isotype	Mouse IgG1
Clone	2G10
Purification	Protein A/G Purification
Buffer	Phosphate buffered solution, pH 7.2, containing 0.05% proclin 300.

Applications

ELISA Detector	0.1-0.4 µg/mL
-----------------------	---------------

Data



Sandwich ELISA-Recombinant Rat PRL/Prolactin protein standard curve. Background subtracted standard curve using

PRL/Prolactin antibody(AN000180P)

(Capture),PRL/Prolactin antibody(AN000180P)(Detector) in sandwich ELISA. The reference range value for Recombinant

Rat PRL/Prolactin protein is 3.13-200 ng/mL.

Preparation & Storage

Storage	Store at 4°C valid for 12 months or -20°C valid for long term storage, avoid freeze / thaw cycles.
Shipping	The product is shipped with ice pack, upon receipt, store it immediately at the temperature recommended.

Background

Prolactin (PRL) is a hormone with multiple actions in the central nervous system (CNS) spanning from physiology to pathology. PRL exerts different actions through its receptors that can be found in both neurons and glial cells (astrocytes, microglia and oligodendrocytes) of the brain. It is generally believed that in vertebrates, prolactin (PRL) is predominantly synthesized and released by pituitary lactotrophs and plays important roles in many physiological processes via activation of PRL receptor (PRLR), including water and electrolyte balance, reproduction, growth and development, metabolism, immuno-modulation, and behavior.

For Research Use Only