

# ARG1 Polyclonal Antibody

catalog number: D-AB-10165L

**Note:** Centrifuge before opening to ensure complete recovery of vial contents.

## Description

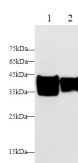
<b>Reactivity</b>	Mouse;Rat
<b>Immunogen</b>	Recombinant Human ARG1 protein expressed by E.coli
<b>Host</b>	Rabbit
<b>Isotype</b>	Rabbit IgG
<b>Purification</b>	Antigen Affinity Purification
<b>Conjugation</b>	Unconjugated
<b>buffer</b>	PBS with 0.05% proclin 300, 1% protective protein and 50% glycerol,pH7.4

## Applications

## Recommended Dilution

<b>WB</b>	1:200-1:500
-----------	-------------

## Data



Western blot with ARG1 Polyclonal antibody at dilution of 1:500.lane 1:Mouse liver,lane 2:Rat liver

**Observed-MV:37 kDa**

**Calculated-MV:35 kDa**

## Preparation & Storage

<b>Storage</b>	Store at -20°C Valid for 12 months. Avoid freeze / thaw cycles.
<b>Shipping</b>	The product is shipped with ice pack, upon receipt, store it immediately at the temperature recommended.

## Background

Liver arginase(Arginase-1) belongs to the arginase family. Hepatic arginase 1 is closely associated with alternative macrophage activation(PMID:12098359) and Arg1 has been shown to protect motor neurons from trophic factor deprivation and allow sensory neurons to overcome neurite outgrowth inhibition by myelin proteins(PMID: 20071539).It can exist as a homotrimer(PMID:16141327) and it has 3 isoforms produced by alternative splicing.Defects in ARG1 are the cause of argininemia (ARGIN).

## For Research Use Only