

Fam50b Polyclonal Antibody

catalog number: **E-AB-92201**

Note: Centrifuge before opening to ensure complete recovery of vial contents.

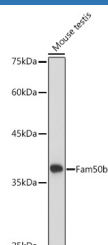
Description

| | |
|---------------------|--|
| Reactivity | Human;Mouse;Rat |
| Immunogen | Recombinant fusion protein of mouse Fam50b |
| Host | Rabbit |
| Isotype | IgG |
| Purification | Affinity purification |
| Buffer | Phosphate buffered solution, pH 7.4, containing 0.05% stabilizer and 50% glycerol. |

Applications Recommended Dilution

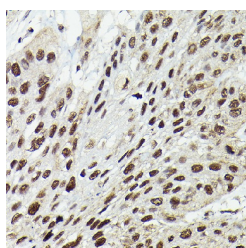
| | |
|------------|--------------|
| WB | 1:500-1:2000 |
| IHC | 1:50-1:200 |

Data

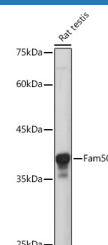
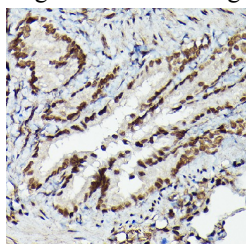


Western blot analysis of extracts of Mouse testis using Fam50b Polyclonal Antibody at 1:1000 dilution.

Observed-MV:39 kDa
Calculated-MV:40 kDa

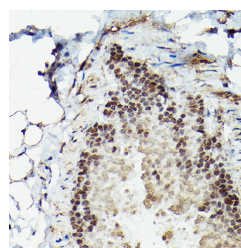


Immunohistochemistry of paraffin-embedded human esophageal cancer using Fam50b Polyclonal Antibody at dilution of 1:50 (40x lens). Perform high pressure antigen retrieval with 10 mM citrate buffer pH 6.0 before commencing with IHC staining protocol.



Western blot analysis of extracts of Rat testis using Fam50b Polyclonal Antibody at 1:1000 dilution.

Observed-MV:39 kDa
Calculated-MV:40 kDa



Immunohistochemistry of paraffin-embedded mouse lung using Fam50b Polyclonal Antibody at dilution of 1:50 (40x lens). Perform high pressure antigen retrieval with 10 mM citrate buffer pH 6.0 before commencing with IHC staining protocol.

For Research Use Only

Immunohistochemistry of paraffin-embedded rat lung using Fam50b Polyclonal Antibody at dilution of 1:50 (40x lens). Perform high pressure antigen retrieval with 10 mM citrate buffer pH 6.0 before commencing with IHC staining protocol.

Preparation & Storage

| | |
|-----------------|--|
| Storage | Store at -20°C Valid for 12 months. Avoid freeze / thaw cycles. |
| Shipping | The product is shipped with ice pack, upon receipt, store it immediately at the temperature recommended. |

Background

Predicted to be involved in chromatin organization. Predicted to be located in intercellular bridge; midbody; and nucleoplasm. Predicted to be active in nucleus. Is expressed in primary spermatocyte; seminiferous tubule; and spermatid. Orthologous to human FAM50B (family with sequence similarity 50 member B).

For Research Use Only