

SLC1A4 Polyclonal Antibody

catalog number: E-AB-12641

Note: Centrifuge before opening to ensure complete recovery of vial contents.

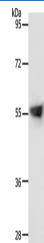
Description

Reactivity	Human;Mouse
Immunogen	Synthetic peptide of human SLC1A4
Host	Rabbit
Isotype	IgG
Purification	Affinity purification
Buffer	Phosphate buffered solution, pH 7.4, containing 0.05% stabilizer and 50% glycerol.

Applications Recommended Dilution

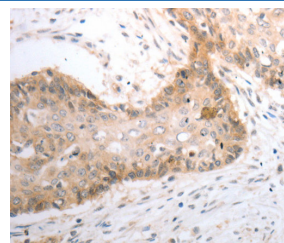
WB	1:500-1:2000
IHC	1:25-1:100

Data



Western Blot analysis of Human liver cancer tissue using SLC1A4 Polyclonal Antibody at dilution of 1:800

Calculated-MW:56 kDa



Immunohistochemistry of paraffin-embedded Human cervical cancer using SLC1A4 Polyclonal Antibody at dilution of 1:40

Preparation & Storage

Storage	Store at -20°C Valid for 12 months. Avoid freeze / thaw cycles.
Shipping	The product is shipped with ice pack, upon receipt, store it immediately at the temperature recommended.

Background

Neutral amino acid transporter A is a protein that in humans is encoded by the SLC1A4 gene. In melanocytic cells SLC1A4 gene expression may be regulated by MITF. ASCT1 does not transport glutamate or aspartate but alanine, serine, cysteine, and threonine instead. ASCT1 transporter functions primarily as an amino acid exchanger. Transport is associated with a chloride channel activity that is thermodynamically uncoupled from amino acid transport.

For Research Use Only