

## SLC34A2 Polyclonal Antibody

**catalog number: E-AB-12644**

**Note:** Centrifuge before opening to ensure complete recovery of vial contents.

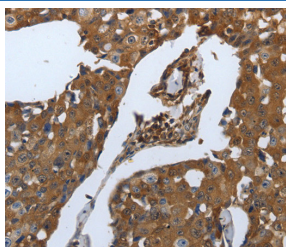
### Description

<b>Reactivity</b>	Human
<b>Immunogen</b>	Synthetic peptide of human SLC34A2
<b>Host</b>	Rabbit
<b>Isotype</b>	IgG
<b>Purification</b>	Affinity purification
<b>Buffer</b>	Phosphate buffered solution, pH 7.4, containing 0.05% stabilizer and 50% glycerol.

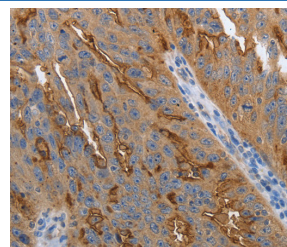
### Applications Recommended Dilution

<b>IHC</b>	1:100-1:300
------------	-------------

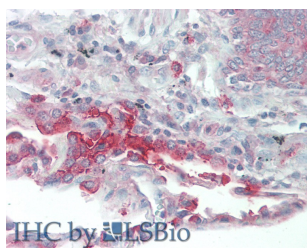
### Data



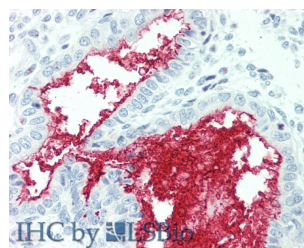
Immunohistochemistry of paraffin-embedded Human breast cancer tissue using SLC34A2 Polyclonal Antibody at dilution of 1:70



Immunohistochemistry of paraffin-embedded Human ovarian cancer using SLC34A2 Polyclonal Antibody at dilution of 1:70



Immunohistochemistry of paraffin-embedded Human Lung tissue using SLC34A2 Polyclonal Antibody at dilution of 1:60(Elabscience Product Detected by Lifespan).



Immunohistochemistry of paraffin-embedded Human Uterus tissue using SLC34A2 Polyclonal Antibody at dilution of 1:60(Elabscience Product Detected by Lifespan).

### Preparation & Storage

<b>Storage</b>	Store at -20°C Valid for 12 months. Avoid freeze / thaw cycles.
<b>Shipping</b>	The product is shipped with ice pack, upon receipt, store it immediately at the temperature recommended.

### Background

The protein encoded by this gene is a pH-sensitive sodium-dependent phosphate transporter. Phosphate uptake is increased at lower pH. Defects in this gene are a cause of pulmonary alveolar microlithiasis. Three transcript variants encoding two different isoforms have been found for this gene.

### For Research Use Only