

## Recombinant Human Autotaxin/ENPP2 Protein (aa 36-863, His Tag)

Catalog Number: PKSH033693

**Note:** Centrifuge before opening to ensure complete recovery of vial contents.

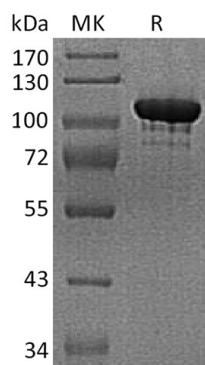
### Description

<b>Species</b>	Human
<b>Source</b>	HEK293 Cells-derived Human Autotaxin;ENPP2 protein Ala36-Ile863, with an C-terminal His
<b>Calculated MW</b>	96 kDa
<b>Observed MW</b>	100-120 kDa
<b>Accession</b>	AAH34961.1
<b>Bio-activity</b>	Not validated for activity

### Properties

<b>Purity</b>	> 90 % as determined by reducing SDS-PAGE.
<b>Endotoxin</b>	< 1.0 EU per µg of the protein as determined by the LAL method.
<b>Storage</b>	Generally, lyophilized proteins are stable for up to 12 months when stored at -20 to -80°C. Reconstituted protein solution can be stored at 4-8°C for 2-7 days. Aliquots of reconstituted samples are stable at < -20°C for 3 months.
<b>Shipping</b>	This product is provided as lyophilized powder which is shipped with ice packs.
<b>Formulation</b>	Lyophilized from a 0.2 µm filtered solution of 20mMPB, 150mMNaCl, pH 7.4. Normally 5% - 8% trehalose, mannitol and 0.01% Tween 80 are added as protectants before lyophilization.
	Please refer to the specific buffer information in the printed manual.
<b>Reconstitution</b>	Please refer to the printed manual for detailed information.

### Data



> 90 % as determined by reducing SDS-PAGE.

### Background

ENPP-2, also known as Autotaxin, belongs to the ectonucleotide pyrophosphatase/phosphodiesterase (NPP) family. Some NPPs hydrolyze phosphates from nucleotides and their derivatives. ENPP-2 shares 40 - 50% identity to ENPP1 & 3, all of which contain a N-terminal intracellular domain, a single transmembrane domain and a large extracellular domain that includes a catalytic domain, two somatomedin-B-like domains, and a C-terminal nuclease-like domain. Evidence shows LPA and sphingosine 1-phosphate to be specific inhibitors of ENPP-2. ENPP-2 was originally found to stimulate tumor cell motility and has since been found to enhance tumor invasion and metastasis and to be up-regulated in several types of carcinomas including breast and lung.

### For Research Use Only

Toll-free: 1-888-852-8623  
Web: [www.elabscience.com](http://www.elabscience.com)

Tel: 1-832-243-6086  
Email: [techsupport@elabscience.com](mailto:techsupport@elabscience.com)

Fax: 1-832-243-6017