

Recombinant Vinculin Monoclonal Antibody

catalog number: **AN300693L**

Note: Centrifuge before opening to ensure complete recovery of vial contents.

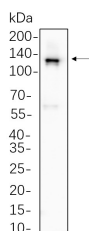
Description

| | |
|---------------------|---|
| Reactivity | Human;Mouse;Rat |
| Immunogen | Recombinant Human Vinculin protein |
| Host | Rabbit |
| Isotype | IgG, κ |
| Clone | B632 |
| Purification | Protein A |
| Buffer | PBS, 50% glycerol, 0.05% Proclin 300, 0.05% protein protectant. |

Applications Recommended Dilution

| | |
|--------------|----------------|
| IHC | 1:4000-1:20000 |
| WB | 1:2000-1:10000 |
| IF | 1:200-1:1000 |
| ELISA | 1:5000-1:20000 |
| IP | 1:50-1:200 |

Data



Western Blot with Recombinant Vinculin Monoclonal Antibody at dilution of 1:1000 dilution. Lane A: 3T3-L1 cell lysate.

Observed-MW:124 kDa
Calculated-MW:124 kDa

Preparation & Storage

| | |
|-----------------|---|
| Storage | Store at -20°C Valid for 12 months. Avoid freeze / thaw cycles. |
| Shipping | Ice bag |

Background

Vinculin is a cytoskeletal protein associated with cell-cell and cell-matrix junctions, where it is thought to function as one of several interacting proteins involved in anchoring F-actin to the membrane. Defects in VCL are the cause of cardiomyopathy dilated type 1W. Dilated cardiomyopathy is a disorder characterized by ventricular dilation and impaired systolic function, resulting in congestive heart failure and arrhythmia. Multiple alternatively spliced transcript variants have been found for this gene, but the biological validity of some variants has not been determined.

For Research Use Only

Toll-free: 1-888-852-8623
Web: www.elabscience.com

Tel: 1-832-243-6086
Email: techsupport@elabscience.com

Fax: 1-832-243-6017

Rev. V1.2