

Recombinant Human α -Lactalbumin/LALBA Protein (His Tag)

Catalog Number: PKSH033250



Note: Centrifuge before opening to ensure complete recovery of vial contents.

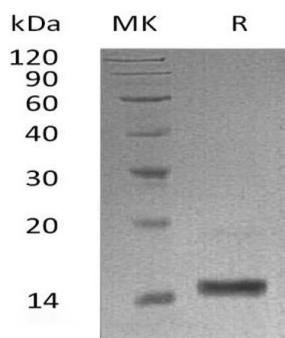
Description

Species	Human
Mol_Mass	15.1 kDa
Accession	P00709
Bio-activity	Not validated for activity

Properties

Purity	> 95 % as determined by reducing SDS-PAGE.
Endotoxin	< 1.0 EU per μ g of the protein as determined by the LAL method.
Storage	Store at < -20°C, stable for 6 months. Please minimize freeze-thaw cycles.
Shipping	This product is provided as liquid. It is shipped at frozen temperature with blue ice/gel packs. Upon receipt, store it immediately at < - 20°C.
Formulation	Supplied as a 0.2 μ m filtered solution of 20mM Tris-HCl, 150mM NaCl, pH 8.0.
Reconstitution	Not Applicable

Data



> 95 % as determined by reducing SDS-PAGE.

Background

Alpha-lactalbumin(LALBA) is a secreted protein that is a member of the glycosyl hydrolase 22 family. It is expressed in mammary gland in milk. It is the regulatory subunit of lactose synthase. It changes the substrate specificity of galactosyltransferase in the mammary gland making glucose a good acceptor substrate for this enzyme.

For Research Use Only