

APC Anti-Human CD180 Antibody[MHR73-11]

Catalog Number: AN00326E

Note: Centrifuge before opening to ensure complete recovery of vial contents.

Description

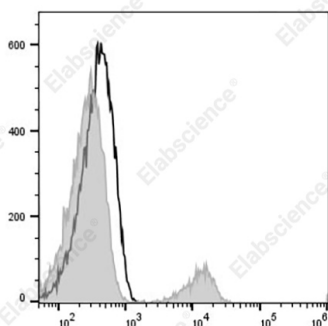
Reactivity	Human
Host	Mouse
Isotype	Mouse IgG1, κ
Clone No.	MHR73-11
Isotype Control	APC Mouse IgG1, κ Isotype Control[MOPC-21] [Product E-AB-F09792E]
Conjugation	APC
Conjugation Information	APC is designed to be excited by the Red (627-640 nm) laser and detected using an optical filter centered near 660 nm (e.g., a 660/20 nm bandpass filter).
Storage Buffer	Phosphate buffered solution, pH 7.2, containing 0.09% stabilizer.

Applications

Recommended usage

FCM	Each lot of this antibody is quality control tested by flow cytometric analysis. The amount of the reagent is suggested to be used 5 μL of antibody per test (million cells in 100 μL staining volume or per 100 μL of whole blood). Please check your vial before the experiment. Since applications vary, the appropriate dilutions must be determined for individual use.
------------	----------------------------------------------------------------------------------------------------------------------------------------------------------------------------------------------------------------------------------------------------------------------------------------------------------------------------------------------------------------------------------------------------------------------------------

Data



Staining of normal human peripheral blood cells with APC Anti-Human CD180 Antibody[MHR73-11] (filled gray histogram) or APC Mouse IgG1, κ Isotype Control (empty black histogram). Cells in the lymphocytes gate were used for analysis.

Preparation & Storage

Storage	Keep as concentrated solution. This product can be stored at 2-8°C for 24 months. Please protected from prolonged exposure to light and do not freeze.
Shipping	Ice bag

Antigen Information

Alternate Names	CD180;Radio-protective 105-kD protein;RP105
Uniprot ID	Q99467
Gene ID	4064

For Research Use Only

Background

CD180, also known as RP105, is a 105 kD member of the toll-like receptor (TLR) family and is expressed on most B cells, monocytes/macrophages and dendritic cells. The TLR family's structural characteristics are critically involved in protein-protein signaling interactions leading to the activation of the innate immune system. Additionally, MD-1, a secretory protein, associates with CD180 (RP105) at the cell surface and this complex, in conjunction with TLR4, recognizes bacterial LPS. The human CD180 (RP105) gene maps to 5q12. The MHR73-11 antibody is able to activate B cells and to protect against irradiation- or dexamethasone-induced apoptosis.