

DDX1 Polyclonal Antibody

catalog number: E-AB-61224

Note: Centrifuge before opening to ensure complete recovery of vial contents.

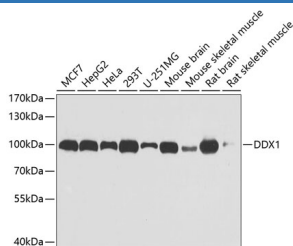
Description

Reactivity	Human;Mouse;Rat
Immunogen	Recombinant fusion protein of human DDX1 (NP_004930.1).
Host	Rabbit
Isotype	IgG
Purification	Affinity purification
Buffer	Phosphate buffered solution, pH 7.4, containing 0.05% stabilizer and 50% glycerol.

Applications

Applications	Recommended Dilution
WB	1:500-1:2000
IHC	1:50-1:200
IF	1:10-1:100

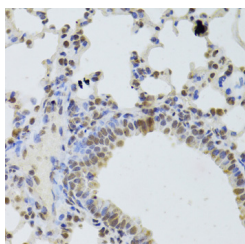
Data



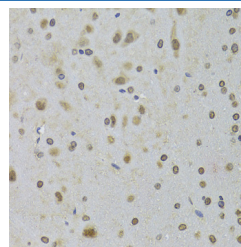
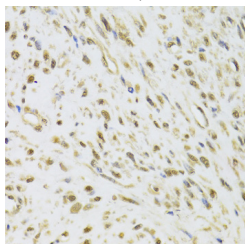
Western blot analysis of extracts of various cell lines using DDX1 Polyclonal Antibody at dilution of 1:1000.

Observed-MW: 100 kDa

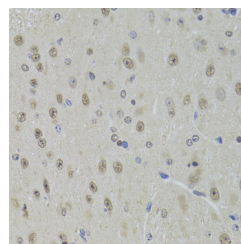
Calculated-MW: 68 kDa/69 kDa/82 kDa



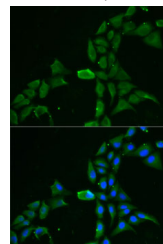
Immunohistochemistry of paraffin-embedded Mouse lung using DDX1 Polyclonal Antibody at dilution of 1:100 (40x lens).



Immunohistochemistry of paraffin-embedded Rat brain using DDX1 Polyclonal Antibody at dilution of 1:100 (40x lens).



Immunohistochemistry of paraffin-embedded Mouse brain using DDX1 Polyclonal Antibody at dilution of 1:100 (40x lens).



For Research Use Only

Toll-free: 1-888-852-8623
Web: www.elabscience.com

Tel: 1-832-243-6086
Email: techsupport@elabscience.com

Fax: 1-832-243-6017

Rev. V1.7

Immunohistochemistry of paraffin-embedded Human leiomyoma of uterus using DDX1 Polyclonal Antibody at dilution of 1:100 (40x lens).

Immunofluorescence analysis of MCF7 cells using DDX1 Polyclonal Antibody

Preparation & Storage

Storage

Store at -20°C Valid for 12 months. Avoid freeze / thaw cycles.

Shipping

The product is shipped with ice pack, upon receipt, store it immediately at the temperature recommended.

Background

DEAD box proteins, characterized by the conserved motif Asp-Glu-Ala-Asp (DEAD), are putative RNA helicases. They are implicated in a number of cellular processes involving alteration of RNA secondary structure such as translation initiation, nuclear and mitochondrial splicing, and ribosome and spliceosome assembly. Based on their distribution patterns, some members of this family are believed to be involved in embryogenesis, spermatogenesis, and cellular growth and division. This gene encodes a DEAD box protein of unknown function. It shows high transcription levels in 2 retinoblastoma cell lines and in tissues of neuroectodermal origin.

For Research Use Only