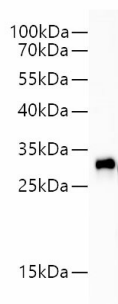


GFP Monoclonal Antibody

Catalog Number: GA480100L

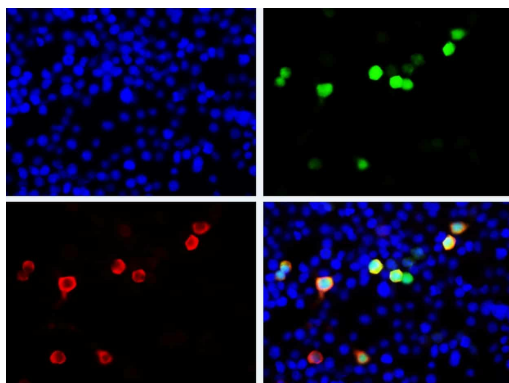
Note: Centrifuge before opening to ensure complete recovery of vial contents.

Description	
Reactivity	All
Immunogen	Recombinant GFP protein expressed by E.coli
Host	Mouse
Isotype	IgG2a
Clone	5B5
Purification	Protein A/G Purification
Conjugation	Unconjugated
Buffer	PBS, pH 7.2. Contains 0.05% Proclin300.
Applications	Recommended Dilution
WB	1:100000-200000
IP	3µg/sample
IF	1:8000-16000
FCM	0.2µg
Data	

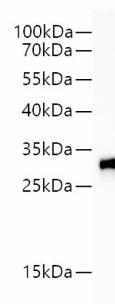


Western blot of eGFP protein with anti-eGFP at dilution of 1:80000.

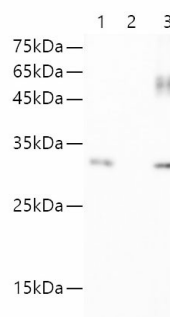
Observed-MW:32 kDa
Calculated-MW:32 kDa



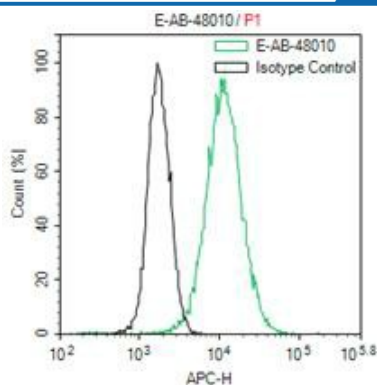
Immunofluorescent analysis of 293F cells transfected with the FLAG-GFP, using anti-GFP-Tag Monoclonal Antibody at dilution of 1:8000.



Immunohistochemical analysis of transgenic zebrafish embryo with anti-GFP antibody at dilution of 1:800.



IP Result of 293 cells transfected with GFP-Tag fusion protein, using anti-GFP-Tag mouse monoclonal antibody. Lane 1: input, lane 2: mouse IgG2a Isotype Control, Lane 3: anti-GFP-Tag monoclonal antibody



1x10⁶ CHO cells Transfected with a GFP plasmid were stained with 0.2ug Anti-GFP tag mAb(E-AB-48010) and AF647 conjugated Goat Anti-mouse IgG (H+L); Isotype Control stained with 0.2ug mouse IgG and AF647 conjugated Goat Anti-mouse IgG (H+L)

Preparation & Storage

Storage

Store at -20°C Valid for 12 months. Avoid freeze / thaw cycles.

Shipping

The product is shipped with ice pack, upon receipt, store it immediately at the temperature recommended.

Background

The green fluorescent protein (GFP) is a protein that exhibits bright green fluorescence when exposed to light in the blue to ultraviolet range. It is first isolated from the jellyfish *Aequorea victoria* and is frequently used as a reporter of expression. GFP is widely used in gene expression, tracing and protein subcellular localization.