

WSB2 Polyclonal Antibody

catalog number: E-AB-65987

Note: Centrifuge before opening to ensure complete recovery of vial contents.

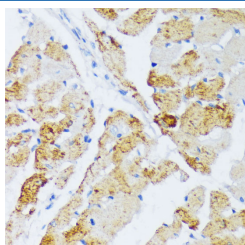
Description

| | |
|---------------------|------------------------------------------------------------------------------------|
| Reactivity | Mouse;Rat |
| Immunogen | Recombinant fusion protein of human WSB2 (NP_061109.1). |
| Host | Rabbit |
| Isotype | IgG |
| Purification | Affinity purification |
| Buffer | Phosphate buffered solution, pH 7.4, containing 0.05% stabilizer and 50% glycerol. |

Applications

| Applications | Recommended Dilution |
|--------------|----------------------|
| IHC | 1:50-1:200 |

Data



Immunohistochemistry of paraffin-embedded Rat heart using WSB2 Polyclonal Antibody at dilution of 1:100 (40x lens).

Preparation & Storage

| | |
|-----------------|----------------------------------------------------------------------------------------------------------|
| Storage | Store at -20°C Valid for 12 months. Avoid freeze / thaw cycles. |
| Shipping | The product is shipped with ice pack, upon receipt, store it immediately at the temperature recommended. |

Background

This gene encodes a member of the WD-protein subfamily. The encoded protein contains five WD-repeats spanning most of the protein and an SOCS box in the C-terminus. The SOCS box may act as a bridge between specific substrate-binding domains and E3 ubiquitin protein ligases. Three transcript variants encoding different isoforms have been found for this gene.

For Research Use Only