

## SEMA4D Polyclonal Antibody

**catalog number: E-AB-90086**

**Note:** Centrifuge before opening to ensure complete recovery of vial contents.

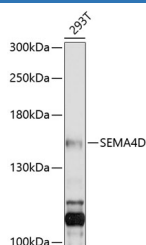
### Description

<b>Reactivity</b>	Human
<b>Immunogen</b>	Recombinant fusion protein of human SEMA4D
<b>Host</b>	Rabbit
<b>Isotype</b>	IgG
<b>Purification</b>	Affinity purification
<b>Buffer</b>	Phosphate buffered solution, pH 7.4, containing 0.05% stabilizer and 50% glycerol.

### Applications

<b>WB</b>	1:200-1:1000
-----------	--------------

### Data



Western blot analysis of extracts of 293T cells using SEMA4D Polyclonal Antibody at 1:1000 dilution.

**Observed-MV:150 kDa**

**Calculated-MV:82 kDa/96 kDa**

### Preparation & Storage

<b>Storage</b>	Store at -20°C Valid for 12 months. Avoid freeze / thaw cycles.
<b>Shipping</b>	The product is shipped with ice pack, upon receipt, store it immediately at the temperature recommended.

### Background

This protein is a member of the semaphorin family of proteins and an important mediator of the movement and differentiation of multiple cell types, including those of the immune, vascular, and nervous systems. VEGF and SEMA4D had a positive correlation with the malignant degree of ovarian cancer, and SEMA4D can serve as an independent prognostic factor. SEMA4D was the first semaphorin described to have immune functions and serves important roles in T cell priming, antibody production, and cell-to-cell adhesion. Proteolytic cleavage of SEMA4D from the cell surface gives rise to a soluble fragment of SEMA4D (sSEMA4D). Similar to the transmembranal form, sSEMA4D is thought to have immunoregulatory properties.

### For Research Use Only