

## FITC Anti-Mouse CD279/PD-1 Antibody[29F.1A12]

Catalog Number: E-AB-F1131C

Note: Centrifuge before opening to ensure complete recovery of vial contents.

### Description

Reactivity	Mouse
Host	Rat
Isotype	Rat IgG2a, κ
Clone No.	29F.1A12
Isotype Control	FITC Rat IgG2a, κ Isotype Control[2A3] [Product E-AB-F09832C]
Conjugation	FITC
Conjugation Information	FITC is designed to be excited by the Blue laser (488 nm) and detected using an optical filter centered near 530 nm (e.g., a 525/40 nm bandpass filter).
Storage Buffer	Phosphate buffered solution, pH 7.2, containing 0.09% sodium azide and 1% BSA.

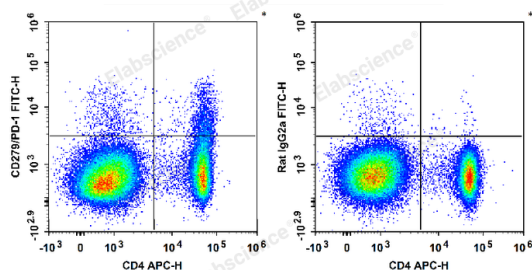
### Applications

### Recommended usage

#### FCM

Each lot of this antibody is quality control tested by flow cytometric analysis. **The amount of the reagent is suggested to be used 5 μL of antibody per test (million cells in 100 μL staining volume or per 100 μL of whole blood).** Please check your vial before the experiment. Since applications vary, the appropriate dilutions must be determined for individual use.

### Data



C57BL/6 murine splenocytes are stained with APC Anti-Mouse CD4 Antibody and FITC Anti-Mouse CD279/PD-1 Antibody (Left). Splenocytes are stained with APC Anti-Mouse CD4 Antibody and FITC Rat IgG2a, κ Isotype Control (Right).

### Preparation & Storage

Storage	Keep as concentrated solution. This product can be stored at 2-8°C for 12 months. Please protected from prolonged exposure to light and do not freeze.
Shipping	Ice bag

### Antigen Information

Alternate Names	Programmed Death-1;PD-1
Uniprot ID	Q02242
Gene ID	18566

### For Research Use Only

## Background

CD279, also known as programmed death-1 (PD-1), is a 50-55 kD glycoprotein belonging to the CD28 family of the Ig superfamily. PD-1 is expressed on activated splenic T and B cells and thymocytes. It is induced on activated myeloid cells as well. PD-1 is involved in lymphocyte clonal selection and peripheral tolerance through binding its ligands, B7-H1 (PD-L1) and B7-DC (PD-L2). It has been reported that PD-1 and PD-L1 interactions are critical to positive selection and play a role in shaping the T cell repertoire. PD-L1 negative costimulation is essential for prolonged survival of intratesticular islet allografts.