

SMYD2 Polyclonal Antibody

Catalog Number:E-AB-61990



Note: Centrifuge before opening to ensure complete recovery of vial contents.

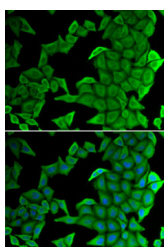
Description

Reactivity	Human,Mouse
Immunogen	Recombinant fusion protein of human SMYD2 (NP_064582.2).
Host	Rabbit
Isotype	IgG
Purification	Affinity purification
Conjugation	Unconjugated
Formulation	PBS with 0.02% sodium azide, 50% glycerol, pH7.3.

Applications Recommended Dilution

IF	1:10-1:100
-----------	------------

Data



Immunofluorescence analysis of U2OS cells using
SMYD2 Polyclonal Antibody

Preparation & Storage

Storage	Store at -20°C. Avoid freeze / thaw cycles.
----------------	---

Background

SMYD2 (SET And MYND Domain Containing 2) is a Protein Coding gene. Among its related pathways are Lysine degradation and PKMTs methylate histone lysines. Gene Ontology (GO) annotations related to this gene include p53 binding and protein-lysine N-methyltransferase activity. An important paralog of this gene is SMYD1.

For Research Use Only

A Reliable Research Partner in Life Science and Medicine

Toll-free: 1-888-852-8623

Web: www.elabscience.com

Tel: 1-832-243-6086

Email: techsupport@elabscience.com

Fax: 1-832-243-6017