

# Recombinant Mouse GH1/Growth Hormone Protein

Catalog Number: PKSM041038



**Note:** Centrifuge before opening to ensure complete recovery of vial contents.

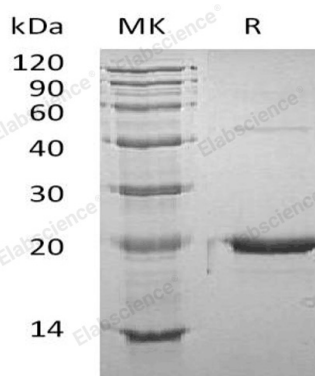
## Description

|                     |                            |
|---------------------|----------------------------|
| <b>Species</b>      | Mouse                      |
| <b>Mol_Mass</b>     | 21.9 kDa                   |
| <b>Accession</b>    | P06880                     |
| <b>Bio-activity</b> | Not validated for activity |

## Properties

|                       |  |
|-----------------------|--|
| <b>Purity</b>         | > 95 % as determined by reducing SDS-PAGE.   |
| <b>Endotoxin</b>      | < 1.0 EU per µg of the protein as determined by the LAL method.  |
| <b>Storage</b>        | Generally, lyophilized proteins are stable for up to 12 months when stored at -20 to -80 °C. Reconstituted protein solution can be stored at 4-8°C for 2-7 days. Aliquots of reconstituted samples are stable at < -20°C for 3 months.   |
| <b>Shipping</b>       | This product is provided as lyophilized powder which is shipped with ice packs.  |
| <b>Formulation</b>    | Lyophilized from a 0.2 µm filtered solution of 20mM HEPES, 4% Sucrose, 4% Mannitol, 0.02% Tween 80, pH 8.0.<br>Normally 5% - 8% trehalose, mannitol and 0.01% Tween 80 are added as protectants before lyophilization.<br>Please refer to the specific buffer information in the printed manual. |
| <b>Reconstitution</b> | Please refer to the printed manual for detailed information.   |

## Data



> 95 % as determined by reducing SDS-PAGE.

## Background

Somatotropin(GH) is a member of the somatotropin/prolactin family of hormones which play an important role in growth control. Its major role in stimulating body growth is to stimulate the liver and other tissues to secrete IGF-1. GH stimulates both the differentiation and proliferation of myoblasts. It also stimulates amino acid uptake and protein synthesis in muscle and other tissues.

## For Research Use Only

A Reliable Research Partner in Life Science and Medicine  
Tel:400-999-2100

Email:[techsupport@elabscience.cn](mailto:techsupport@elabscience.cn)

Web:[www.elabscience.cn](http://www.elabscience.cn)

Rev. V3.5