

# Phospho-DDR1 (Tyr513) Polyclonal Antibody

Catalog Number: E-AB-51058



**Note:** Centrifuge before opening to ensure complete recovery of vial contents.

## Description

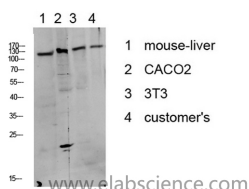
<b>Reactivity</b>	Human, Mouse, Rat
<b>Immunogen</b>	Synthesized phospho derived from human DDR1 (Phospho-Tyr513)
<b>Host</b>	Rabbit
<b>Isotype</b>	IgG
<b>Purification</b>	Affinity purification
<b>Formulation</b>	PBS with 0.02% sodium azide, 0.5% protective protein and 50% glycerol, pH7.4

## Applications

## Recommended Dilution

<b>WB</b>	1:500-2000
<b>ELISA</b>	1:10000-20000

## Data



Western Blot analysis of various cells using Phospho-DDR1 (Tyr513) Polyclonal Antibody at dilution of 1:1000.

**Observed Mw:130kDa**

## Preparation & Storage

**Storage** Store at -20°C. Avoid freeze / thaw cycles.

## Background

Receptor tyrosine kinases play a key role in the communication of cells with their microenvironment. These kinases are involved in the regulation of cell growth, differentiation and metabolism. The protein encoded by this gene belongs to a subfamily of tyrosine kinase receptors with homology to Dictyostelium discoideum protein discoidin I in their extracellular domain, and that are activated by various types of collagen. Expression of this protein is restricted to epithelial cells, particularly in the kidney, lung, gastrointestinal tract, and brain. In addition, it has been shown to be significantly overexpressed in several human tumors. Alternatively spliced transcript variants encoding different isoforms have been described for this gene. DDR1 (Discoidin Domain Receptor Tyrosine Kinase 1) is a Protein Coding gene. Diseases associated with DDR1 include Pulmonary Fibrosis, Idiopathic and Breast Cancer. Among its related pathways are GPCR Pathway and Nanog in Mammalian ESC Pluripotency. GO annotations related to this gene include transferase activity, transferring phosphorus-containing groups and protein tyrosine kinase activity. An important paralog of this gene is DDR2.

## For Research Use Only

A Reliable Research Partner in Life Science and Medicine

Toll-free: 1-888-852-8623

Web: [www.elabscience.com](http://www.elabscience.com)

Tel: 1-832-243-6086

Email: [techsupport@elabscience.com](mailto:techsupport@elabscience.com)

Fax: 1-832-243-6017