

Purified Anti-Human CSPG4 Antibody[9.2.27]

catalog number: AN007420P

Note: Centrifuge before opening to ensure complete recovery of vial contents.

Description

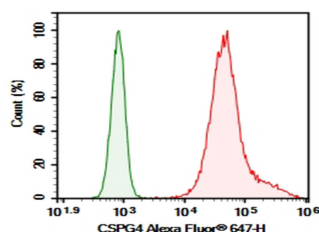
| | |
|---------------------|--|
| Reactivity | Human |
| Immunogen | Recombinant Human CSPG4 protein |
| Host | Mouse |
| Isotype | Mouse BALB/c IgG2a, κ |
| Clone | 9.2.27 |
| Purification | >98%, Protein A/G purified |
| Conjugation | Unconjugated |
| Buffer | Phosphate-buffered solution, pH 7.2, containing 0.05% non-protein stabilizer. Dialyze to completely remove the stabilizer prior to labeling. |

Applications

Recommended Dilution

| | |
|------------|---|
| FCM | 2 $\mu\text{g/mL}$ (1×10^5 - 5×10^5 cells) |
|------------|---|

Data



HT29 were stained with 0.2 μg Purified Anti-Human CSPG4 Antibody[9.2.27] (Right) and 0.2 μg Mouse IgG2a, κ Isotype Control (Left), followed by Alexa Fluor® 647-conjugated Goat Anti-Mouse IgG Secondary Antibody.

Preparation & Storage

| | |
|-----------------|--|
| Storage | Store at 4°C valid for 12 months or -20°C valid for long term storage, avoid freeze / thaw cycles. |
| Shipping | Ice bag |

Background

A human melanoma-associated chondroitin sulfate proteoglycan plays a role in stabilizing cell-substratum interactions during early events of melanoma cell spreading on endothelial basement membranes. CSPG4 represents an integral membrane chondroitin sulfate proteoglycan expressed by human malignant melanoma cells.