

IGF2BP3 Polyclonal Antibody

catalog number: E-AB-19509

Note: Centrifuge before opening to ensure complete recovery of vial contents.

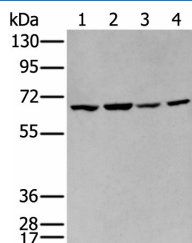
Description

Reactivity	Human
Immunogen	Synthetic peptide of human IGF2BP3
Host	Rabbit
Isotype	IgG
Purification	Antigen affinity purification
Buffer	Phosphate buffered solution, pH 7.4, containing 0.05% stabilizer and 50% glycerol.

Applications

Applications	Recommended Dilution
WB	1:500-1:2000
IHC	1:25-1:100

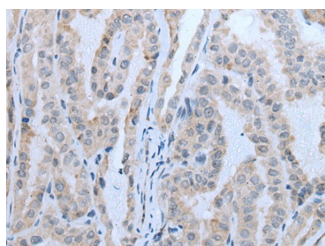
Data



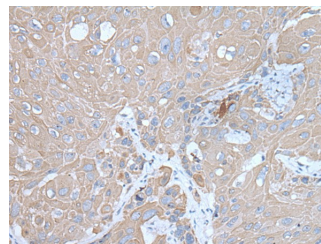
Western blot analysis of 293T and Hela cell lysates using IGF2BP3 Polyclonal Antibody at dilution of 1:350

Observed-MW: Refer to figures

Calculated-MW: 64 kDa



Immunohistochemistry of paraffin-embedded Human thyroid cancer tissue using IGF2BP3 Polyclonal Antibody at dilution of 1:30 (×200)



Immunohistochemistry of paraffin-embedded Human esophagus cancer tissue using IGF2BP3 Polyclonal Antibody at dilution of 1:30 (×200)

Preparation & Storage

Storage	Store at -20°C Valid for 12 months. Avoid freeze / thaw cycles.
Shipping	The product is shipped with ice pack, upon receipt, store it immediately at the temperature recommended.

Background

For Research Use Only

The protein encoded by this gene is primarily found in the nucleolus, where it can bind to the 5' UTR of the insulin-like growth factor II leader 3 mRNA and may repress translation of insulin-like growth factor II during late development. The encoded protein contains several KH domains, which are important in RNA binding and are known to be involved in RNA synthesis and metabolism. A pseudogene exists on chromosome 7, and there are putative pseudogenes on other chromosomes.

For Research Use Only

Toll-free: 1-888-852-8623
Web: www.elabscience.com

Tel: 1-832-243-6086
Email: techsupport@elabscience.com

Fax: 1-832-243-6017

Rev. V1.7