

Recombinant Complement Factor H Monoclonal Antibody

catalog number: **AN300573P**

Note: Centrifuge before opening to ensure complete recovery of vial contents.

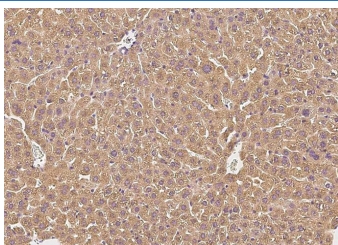
Description

Reactivity	Mouse
Immunogen	Recombinant Mouse Complement Factor H Protein
Host	Rabbit
Isotype	IgG
Clone	10A12
Purification	Protein A
Buffer	0.2 µm filtered solution in PBS

Applications Recommended Dilution

IHC-P	1:50-1:200
--------------	------------

Data



Immunohistochemistry of paraffin-embedded mouse liver using Complement Factor H Monoclonal Antibody at dilution of 1:100.

Preparation & Storage

Storage	This antibody can be stored at 2°C-8°C for one month without detectable loss of activity. Antibody products are stable for twelve months from date of receipt when stored at -20°C to -80°C. Preservative-Free. Avoid repeated freeze-thaw cycles.
Shipping	Ice bag

Background

CFH is one of the most abundant complement components in blood where the liver is the major source of CFH protein in vivo. In addition, CFH is secreted by additional cell types including monocytes, fibroblasts, or endothelial cells.

For Research Use Only