

PE Anti-Human IL-4 Antibody[MP4-25D2]

Catalog Number: E-AB-F1203D

Note: Centrifuge before opening to ensure complete recovery of vial contents.

Description

Reactivity	Human
Host	Rat
Isotype	Rat IgG1, κ
Clone No.	MP4-25D2
Isotype Control	PE Rat IgG1, κ Isotype Control[HRPN] [Product E-AB-F09822D]
Conjugation	PE
Conjugation Information	PE is designed to be excited by the Blue (488 nm), Green (532 nm) and Yellow-Green (561 nm) lasers and detected using an optical filter centered near 575 nm (e.g., a 585/42 nm bandpass filter).
Storage Buffer	Phosphate buffered solution, pH 7.2, containing 0.09% sodium azide and 1% BSA.

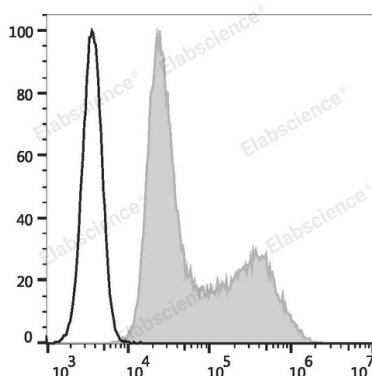
Applications

Recommended usage

FCM

Each lot of this antibody is quality control tested by flow cytometric analysis. **The amount of the reagent is suggested to be used 5 μ L of antibody per test (million cells in 100 μ L staining volume or per 100 μ L of whole blood).** Please check your vial before the experiment. Since applications vary, the appropriate dilutions must be determined for individual use.

Data



HEK293T cells transiently transfected with pcDNA3.1 plasmid encoding Human IL-4 gene are stained with PE Anti-Human IL-4 Antibody (filled gray histogram) or PE Rat IgG1, κ Isotype Control (empty black histogram).

Preparation & Storage

Storage	Keep as concentrated solution. This product can be stored at 2-8°C for 12 months. Please protected from prolonged exposure to light and do not freeze.
Shipping	Ice bag

Antigen Information

Alternate Names	B-cell IgG differentiation factor;B-cell growth factor 1;BSF-1;IGG1 induction factor;IL-4; Interleukin-4
Uniprot ID	P05112

For Research Use Only

Gene ID

3565

Background

IL-4 is a pleiotropic cytokine that is produced by activated T cells, mast cells, and basophils. IL-4 elicits many different biological responses but has two dominant functions. The first is regulating differentiation of naïve CD4+ T cell to the Th2 type. Th2 cells produce IL-4, IL-5, IL-10, and IL-13, which tend to favor a humoral immune response while suppressing a cell-mediated immune response controlled by Th1 cells. The second is regulating IgE and IgG1 production by B cells.