

Caspase-1 Polyclonal Antibody

catalog number: E-AB-40529

Note: Centrifuge before opening to ensure complete recovery of vial contents.

Description

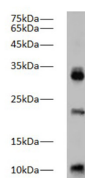
Reactivity	Zebrafish
Immunogen	Synthetic peptide corresponding to Zebrafish caspase-1 conjugated to keyhole limpet haemocyanin.
Host	Rabbit
Isotype	IgG
Purification	Antigen Affinity Purification
Conjugation	Unconjugated
buffer	PBS with 0.05% proclin 300, 1% protective protein and 50% glycerol,pH7.4

Applications

Recommended Dilution

WB	1:1000-2000
-----------	-------------

Data



Western blot of Zebrafish whole lysates with anti-Caspase-1 rabbit polyclonal antibody at dilution of 1:1000.

Observed-MV: 20 kDa, 42kDa

Calculated-MV: 45, 42, 35, 22, 20 kDa

Preparation & Storage

Storage	Store at -20°C Valid for 12 months. Avoid freeze / thaw cycles.
Shipping	The product is shipped with ice pack, upon receipt, store it immediately at the temperature recommended.

Background

CASP1(caspase-1) is also named as IL1BC, IL1BCE and belongs to the peptidase C14A family. It is a cysteine protease that regulates inflammatory processes through its capacity to process and activate the interleukin-1-beta (IL1B), IL18, and IL33 precursor

For Research Use Only