

## Recombinant Human LDHB protein (His Tag)

Catalog Number: PDEH100952

**Note:** Centrifuge before opening to ensure complete recovery of vial contents.

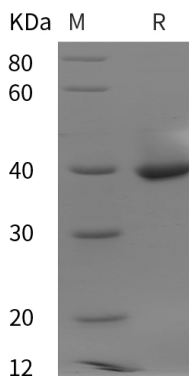
### Description

<b>Species</b>	Human
<b>Source</b>	E.coli-derived Human LDHB protein Ala2-Leu334, with an N-terminal His
<b>Calculated MW</b>	36.5 kDa
<b>Observed MW</b>	40 kDa
<b>Accession</b>	P07195
<b>Bio-activity</b>	Not validated for activity

### Properties

<b>Purity</b>	> 95% as determined by reducing SDS-PAGE.
<b>Endotoxin</b>	< 10 EU/mg of the protein as determined by the LAL method
<b>Storage</b>	Generally, lyophilized proteins are stable for up to 12 months when stored at -20 to -80 °C. Reconstituted protein solution can be stored at 4-8°C for 2-7 days. Aliquots of reconstituted samples are stable at < -20°C for 3 months.
<b>Shipping</b>	This product is provided as lyophilized powder which is shipped with ice packs.
<b>Formulation</b>	Lyophilized from a 0.2 µm filtered solution in PBS with 5% Trehalose and 5% Mannitol.
<b>Reconstitution</b>	It is recommended that sterile water be added to the vial to prepare a stock solution of 0.5 mg/mL. Concentration is measured by UV-Vis.

### Data



> 95 % as determined by reducing SDS-PAGE.

### Background

L-Lactate Dehydrogenase B Chain (LDH-B) is a member of the lactate dehydrogenase family that consists of three members, LDH-A, LDH-B and LDH-C, members of this family function as powerful markers for germ cell tumors. LDH-B is an oxidoreductase that catalyzes the interconversion of pyruvate and lactate with concomitant interconversion of NADH and NAD<sup>+</sup>. It converts pyruvate to lactate when oxygen is absent or in short supply and it performs the reverse reaction during the Cori cycle in the liver. It is also called Hydroxybutyrate Dehydrogenase (HBD) due to its ability to catalyze the oxidation of hydroxybutyrate.

### For Research Use Only