

## Recombinant Human SCF/c-Kit Ligand Protein

Catalog Number: PKSH033080

**Note:** Centrifuge before opening to ensure complete recovery of vial contents.

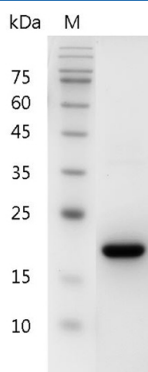
### Description

<b>Species</b>	Human
<b>Source</b>	E.coli-derived Human SCF;c-Kit Ligand protein Glu26-Ala189, with an C-terminal His
<b>Calculated MW</b>	19.4 kDa
<b>Observed MW</b>	21 kDa
<b>Accession</b>	P21583
<b>Bio-activity</b>	Measure by its ability to induce TF-1 cells proliferation. The ED <sub>50</sub> for this effect is <5 ng/mL. The specific activity of recombinant human SCF is > 5 x 10 <sup>5</sup> IU/mg.

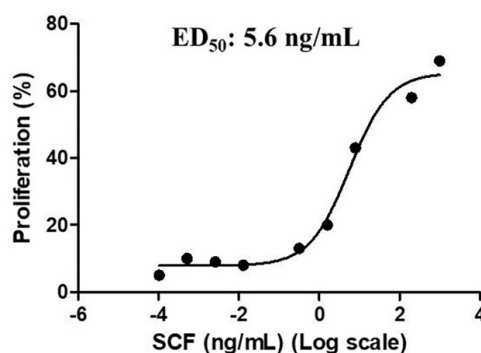
### Properties

<b>Purity</b>	> 98 % as determined by reducing SDS-PAGE.
<b>Endotoxin</b>	< 0.1 EU per µg of the protein as determined by the LAL method.
<b>Storage</b>	Generally, lyophilized proteins are stable for up to 12 months when stored at -20 to -80°C. Reconstituted protein solution can be stored at 4-8°C for 2-7 days. Aliquots of reconstituted samples are stable at < -20°C for 3 months.
<b>Shipping</b>	This product is provided as lyophilized powder which is shipped with ice packs.
<b>Formulation</b>	Lyophilized from sterile PBS, pH 7.4. Normally 5% - 8% trehalose, mannitol and 0.01% Tween 80 are added as protectants before lyophilization. Please refer to the specific buffer information in the printed manual.
<b>Reconstitution</b>	Please refer to the printed manual for detailed information.

### Data



> 98 % as determined by reducing SDS-PAGE.



Measure by its ability to induce TF-1 cells proliferation. The ED<sub>50</sub> for this effect is <5 ng/mL. The specific activity of recombinant human SCF is > 5 x 10<sup>5</sup> IU/mg.

### Background

Stem Cell Factor (SCF) is a hematopoietic growth factor that exerts its activity at the early stages of hematopoiesis. SCF stimulates the proliferation of myeloid; erythroid; and lymphoid progenitors in bone marrow cultures and has been shown to act synergistically with colony stimulating factors.

### For Research Use Only