

Recombinant Human Eotaxin-3/CCL26 Protein (aa 24-94)

Catalog Number: PKSH033733

Note: Centrifuge before opening to ensure complete recovery of vial contents.

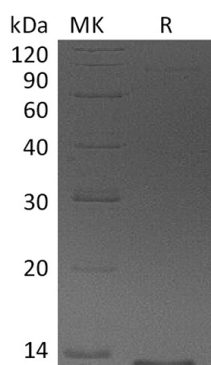
Description

Species	Human
Source	E.coli-derived Human Eotaxin-3;CCL26 protein Thr24-Leu94
Calculated MW	8.5 kDa
Observed MW	13 kDa
Accession	Q9Y258
Bio-activity	Not validated for activity

Properties

Purity	> 95 % as determined by reducing SDS-PAGE.
Concentration	Subject to label value.
Endotoxin	< 1.0 EU per µg of the protein as determined by the LAL method.
Storage	Store at < -20°C, stable for 6 months. Please minimize freeze-thaw cycles.
Shipping	This product is provided as liquid. It is shipped at frozen temperature with blue ice/gel packs. Upon receipt, store it immediately at < -20°C.
Formulation	Supplied as a 0.2 µm filtered solution of 20mM Tris-HCl, 1mM EDTA, 20% Glycerol, pH 9.0.

Data



> 95 % as determined by reducing SDS-PAGE.

Background

Chemokine Ligand 26 protein (CCL26) is a novel small cytokine belonging to the CC chemokine family which is involved in immunoregulatory and inflammatory processes. CCL26 is constitutively expressed in thymus; but only transiently expressed in phytohemagglutinin-stimulated peripheral blood mononuclear cells. It specifically binds and induces chemotaxis in T cells and elicits its effects by interacting with the chemokine receptor CCR4. CCL26; along with Eotaxin-1 and Eotaxin-2; selectively activates the CC chemokine receptor 3 (CCR3). The Eotaxin-3-CCR3 interaction may play an important role in allergic diseases such as atopic dermatitis and bronchial asthma. The full-length cDNA for CCL26 encodes a protein of 94 amino acids with a putative signal peptide of either 23 or 26 amino acid residues. Both the 71 and 68 amino acid residue variants of recombinant CCL26 demonstrate equal potency in inducing chemotaxis of a human CCR3-transfected cell line. Unlike most other CC chemokines; CCL26 maps to human chromosome 7q11.2; within 40 kilobases of the Eotaxin-2 loci. CCL26 and Eotaxin-2 are unique in that they are the only chemokines identified to date that map to chromosome 7.

For Research Use Only

Toll-free: 1-888-852-8623
Web: www.elabscience.com

Tel: 1-832-243-6086
Email: techsupport@elabscience.com

Fax: 1-832-243-6017