

# CXCL2/GRO beta Polyclonal Antibody

catalog number: AN005990L

**Note:** Centrifuge before opening to ensure complete recovery of vial contents.

## Description

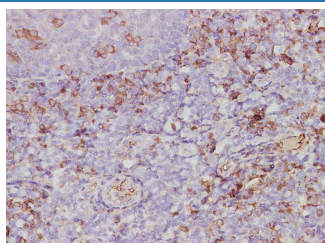
<b>Reactivity</b>	Human
<b>Immunogen</b>	Recombinant Rat CXCL2/GRO beta protein expressed by E.coli
<b>Host</b>	Rabbit
<b>Isotype</b>	IgG
<b>Purification</b>	Antigen Affinity Purification
<b>Conjugation</b>	Unconjugated
<b>buffer</b>	PBS with 0.05% proclin 300, 1% protective protein and 50% glycerol,pH7.4

## Applications

## Recommended Dilution

<b>IHC</b>	1:100-1:200
------------	-------------

## Data



Immunohistochemistry of paraffin-embedded Human tonsil using CXCL2/GRO beta Polyclonal Antibody at dilution of 1:750.

## Preparation & Storage

<b>Storage</b>	Store at -20°C Valid for 12 months. Avoid freeze / thaw cycles.
<b>Shipping</b>	The product is shipped with ice pack, upon receipt, store it immediately at the temperature recommended.

## Background

CXCL2 (C-X-C Motif Chemokine Ligand 2) is a Protein Coding gene. Diseases associated with CXCL2 include Pneumonia and Nephrogenic Systemic Fibrosis. Among its related pathways are MIF Mediated Glucocorticoid Regulation and GPCR downstream signalling. Gene Ontology (GO) annotations related to this gene include chemokine activity and CXCR chemokine receptor binding. An important paralog of this gene is CXCL1.

## For Research Use Only