

## IRF3 Polyclonal Antibody

catalog number: E-AB-70238

**Note:** Centrifuge before opening to ensure complete recovery of vial contents.

### Description

<b>Reactivity</b>	Human;Mouse;Rat
<b>Immunogen</b>	KLH conjugated Synthetic peptide corresponding to Mouse IRF3
<b>Host</b>	Rabbit
<b>Isotype</b>	IgG
<b>Purification</b>	Affinity purification
<b>Conjugation</b>	Unconjugated
<b>Buffer</b>	Phosphate buffered solution, pH 7.4, containing 0.05% stabilizer, 1% protein protectant and 50% glycerol.

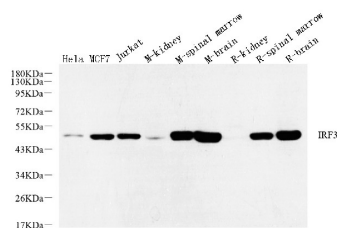
### Applications

### Recommended Dilution

**WB**

1:500-1:2000

### Data



Western Blot analysis of various samples using IRF3

Polyclonal Antibody at dilution of 1:600.

**Observed-MW:50 kDa**

**Calculated-MW:50-55 kDa**

### Preparation & Storage

#### Storage

Store at -20°C Valid for 12 months. Avoid freeze / thaw cycles.

#### Shipping

The product is shipped with ice pack, upon receipt, store it immediately at the temperature recommended.

### Background

This gene encodes a member of the interferon regulatory transcription factor (IRF) family. The encoded protein is found in an inactive cytoplasmic form that upon serine/threonine phosphorylation forms a complex with CREBBP. This complex translocates to the nucleus and activates the transcription of interferons alpha and beta, as well as other interferon-induced genes. Alternatively spliced transcript variants encoding multiple isoforms have been observed for this gene.

### For Research Use Only