

# PLEKHO1 Polyclonal Antibody

Catalog Number: E-AB-11086



**Note:** Centrifuge before opening to ensure complete recovery of vial contents.

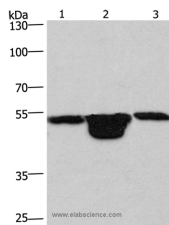
## Description

<b>Reactivity</b>	Human, Mouse, Rat
<b>Immunogen</b>	Recombinant protein of human PLEKHO1
<b>Host</b>	Rabbit
<b>Isotype</b>	IgG
<b>Purification</b>	Affinity purification
<b>Conjugation</b>	Unconjugated
<b>Formulation</b>	PBS with 0.05% sodium azide and 50% glycerol, PH7.4

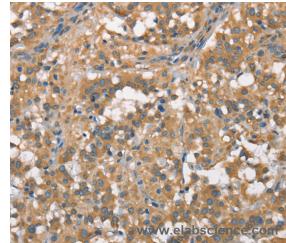
## Applications Recommended Dilution

<b>WB</b>	1:200-1:1000
<b>IHC</b>	1:100-1:300

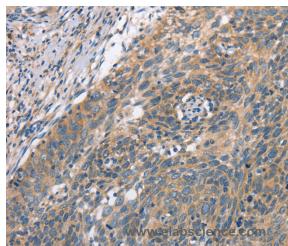
## Data



Western Blot analysis of Hela cell, Mouse muscle and kidney tissue using PLEKHO1 Polyclonal Antibody at dilution of 1:200  
**Calculated Mw: 46kDa**



Immunohistochemistry of paraffin-embedded Human thyroid cancer using PLEKHO1 Polyclonal Antibody at dilution of 1:70



Immunohistochemistry of paraffin-embedded Human cervical cancer using PLEKHO1 Polyclonal Antibody at dilution of 1:70

## Preparation & Storage

**Storage** Store at -20°C. Avoid freeze / thaw cycles.

## Background

Pleckstrin homology domain-containing family O member 1 is a protein that in humans is encoded by the PLEKHO1 gene. Plays a role in the regulation of the actin cytoskeleton through its interactions with actin capping protein (CP). May function to target CK2 to the plasma membrane thereby serving as an adapter to facilitate the

## For Research Use Only

A Reliable Research Partner in Life Science and Medicine

Toll-free: 1-888-852-8623

Web: [www.elabscience.com](http://www.elabscience.com)

Tel: 1-832-243-6086

Email: [techsupport@elabscience.com](mailto:techsupport@elabscience.com)

Fax: 1-832-243-6017

# PLEKHO1 Polyclonal Antibody

Catalog Number: E-AB-11086



phosphorylation of CP by protein kinase 2 (CK2). Appears to target ATM to the plasma membrane. Appears to also inhibit tumor cell growth by inhibiting AKT-mediated cell-survival.

---

## For Research Use Only

A Reliable Research Partner in Life Science and Medicine

Toll-free: 1-888-852-8623

Tel: 1-832-243-6086

Fax: 1-832-243-6017

Web: [www.elabscience.com](http://www.elabscience.com)

Email: [techsupport@elabscience.com](mailto:techsupport@elabscience.com)