

NEFL Polyclonal Antibody

catalog number: E-AB-40657

Note: Centrifuge before opening to ensure complete recovery of vial contents.

Description

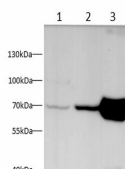
| | |
|---------------------|--|
| Reactivity | Human;mouse;Rat |
| Immunogen | Recombinant Human NEFL protein expressed by E.coli |
| Host | Rabbit |
| Isotype | IgG |
| Purification | Antigen Affinity Purification |
| Conjugation | Unconjugated |
| buffer | PBS with 0.05% proclin 300, 1% protective protein and 50% glycerol,pH7.4 |

Applications

Recommended Dilution

| | |
|-----------|-------------|
| WB | 1:250-1:500 |
|-----------|-------------|

Data



Western blot with NEFL Polyclonal antibody at dilution of 1:500.lane 1:SHSY-5Y whole cell lysate, lane 2:Mouse brain, lane 3:Rat brain

Observed-MV:70 kDa

Calculated-MV:62 kDa

Preparation & Storage

| | |
|-----------------|--|
| Storage | Store at -20°C Valid for 12 months. Avoid freeze / thaw cycles. |
| Shipping | The product is shipped with ice pack,upon receipt,store it immediately at the temperature recommended. |

Background

Neurofilaments usually contain three intermediate filament proteins: NEFL, NEFM, and NEFH which are involved in the maintenance of neuronal caliber. May additionally cooperate with the neuronal intermediate filament proteins PRPH and INA to form neuronal filamentous networks.

For Research Use Only