

# CRABP1 Polyclonal Antibody

catalog number: E-AB-18631

**Note:** Centrifuge before opening to ensure complete recovery of vial contents.

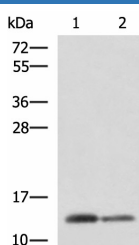
## Description

<b>Reactivity</b>	Human;Mouse;Rat
<b>Immunogen</b>	Fusion protein of human CRABP1
<b>Host</b>	Rabbit
<b>Isotype</b>	IgG
<b>Purification</b>	Antigen affinity purification
<b>Conjugation</b>	Unconjugated
<b>buffer</b>	Phosphate buffered solution, pH 7.4, containing 0.05% stabilizer and 50% glycerol.

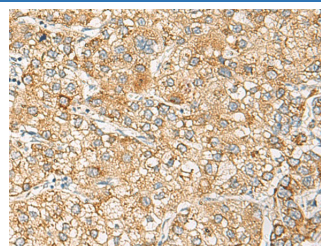
## Applications

Applications	Recommended Dilution
<b>WB</b>	1:1000-1:5000
<b>IHC</b>	1:100-1:300

## Data



Western blot analysis of Human breast tissue and Human thyroid tissue lysates using CRABP1 Polyclonal Antibody at dilution of 1:2000



Immunohistochemistry of paraffin-embedded Human liver cancer tissue using CRABP1 Polyclonal Antibody at dilution of 1:120(×200)

**Observed-MV:Refer to figures**

**Calculated-MV:16 kDa**

## Preparation & Storage

<b>Storage</b>	Store at -20°C Valid for 12 months. Avoid freeze / thaw cycles.
<b>Shipping</b>	The product is shipped with ice pack, upon receipt, store it immediately at the temperature recommended.

## Background

This gene encodes a specific binding protein for a vitamin A family member and is thought to play an important role in retinoic acid-mediated differentiation and proliferation processes. It is structurally similar to the cellular retinol-binding proteins, but binds only retinoic acid at specific sites within the nucleus, which may contribute to vitamin A-directed differentiation in epithelial tissue.

## For Research Use Only