

beta Tubulin Monoclonal Antibody

catalog number: E-AB-20033

Note: Centrifuge before opening to ensure complete recovery of vial contents.

Description

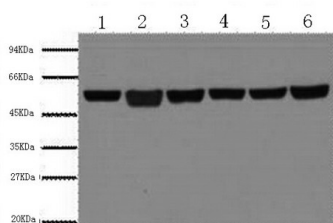
Reactivity	Human;Mouse;Rat;Monkey;Chicken;Dog;Hamster;Rabbit;Sheep;Insect;Yeast
Immunogen	Synthetic Peptide
Host	Mouse
Isotype	IgG
Clone	8B2
Purification	Protein A purification
Conjugation	Unconjugated
buffer	Phosphate buffered solution, pH 7.4, containing 0.05% stabilizer, 0.5% protein protectant and 50% glycerol.

Applications

Recommended Dilution

WB	1:5000-1:10000
IHC	1:100-1:300
IF	1:100-1:300

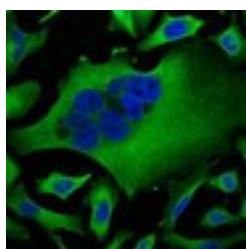
Data



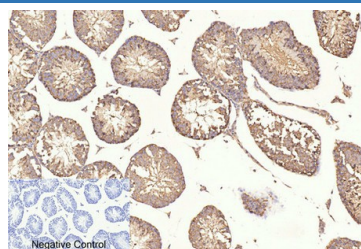
Western Blot analysis of A549, Rat brain, Mouse brain, Chicken lung, Rabbit testis, Sheep muscle using beta Tubulin Monoclonal Antibody at dilution of 1:5000.

Observed-MV:55 kDa

Calculated-MV:50 kDa



Immunofluorescence analysis of HeLa tissue using beta Tubulin Monoclonal Antibody at dilution of 1:100.



Immunohistochemistry of paraffin-embedded Mouse testis tissue using beta Tubulin Monoclonal Antibody at dilution of 1:200.

Preparation & Storage

Storage	Store at -20°C Valid for 12 months. Avoid freeze / thaw cycles.
Shipping	The product is shipped with ice pack, upon receipt, store it immediately at the temperature recommended.

Background

For Research Use Only

beta Tubulin Monoclonal Antibody

catalog number: E-AB-20033



There are five tubulins in human cells: alpha, beta, gamma, delta, and epsilon. Tubulins are conserved across species. They form heterodimers, which multimerize to form a microtubule filament. An alpha and beta tubulin heterodimer is the basic structural unit of microtubules. The heterodimer does not come apart, once formed. The alpha and beta tubulins, which are each about 55 kDa MW, are homologous but not identical. Alpha, beta, and gamma tubulins have all been used as loading controls. Tubulin expression may vary according to resistance to antimicrobial and antimitotic drugs.

For Research Use Only

A Reliable Research Partner in Life Science and Medicine
Tel: 400-999-2100

Email: techsupport@elabscience.cn

Web: www.elabscience.cn

Rev. V1.7